

## SPATA6 Polyclonal Antibody

Catalog number: 11849-1-AP

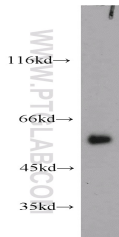
Size: 48 µg/150 µl

Source: Rabbit

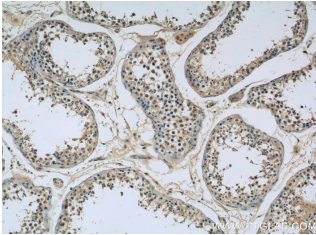
Isotype: IgG

Synonyms:

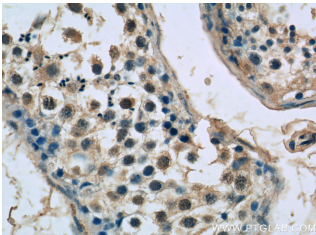
SPATA6; FLJ10007, HASH, SPATA6, spermatogenesis associated 6, SRF 1, SRF1



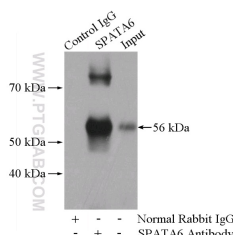
mouse testis tissue were subjected to SDS PAGE followed by western blot with 11849-1-AP (SPATA6 antibody) at dilution of 1:800



Immunohistochemistry of paraffin-embedded human testis tissue slide using 11849-1-AP ( SPATA6 Antibody) at dilution of 1:50 (under 10x lens)



Immunohistochemistry of paraffin-embedded human testis tissue slide using 11849-1-AP ( SPATA6 Antibody) at dilution of 1:50 (under 40x lens)



IP Result of anti-SPATA6

(IP:11849-1-AP, 4ug;

### Applications

Tested applications:	ELISA, WB, IHC, IP
Species specificity:	Human, Mouse, Rat; other species not tested.
Calculated SPATA6 MW:	472aa, 54 kDa
Observed SPATA6 MW:	54-56 kDa
Positive WB detected in	Mouse testis tissue, mouse ovary tissue
Positive IP detected in	Mouse testis tissue
Positive IHC detected in	Human testis tissue
Recommended dilution:	WB: 1:200-1:2000
	IP: 1:200-1:2000
	IHC: 1:20-1:200

Application key: WB = Western blotting, IHC = Immunohistochemistry, IF = Immunofluorescence, IP = Immunoprecipitation

### Immunogen information

Immunogen:	Ag2413
GenBank accession number:	BC020660
Gene ID (NCBI):	54558
Full name:	Spermatogenesis associated 6

### Product information

Purification method:	Antigen affinity purification
Storage:	PBS with 0.1% sodium azide and 50% glycerol pH 7.3. Store at -20°C.

Detection:11849-1-AP 1:800)  
with mouse testis tissue lysate  
4000ug.