

## TMEFF2 Polyclonal Antibody

Catalog number: 11928-1-AP

Size: 48 µg/150 µl

Source: Rabbit

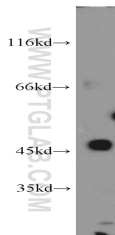
Isotype: IgG

Synonyms:

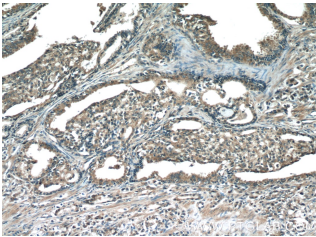
TMEFF2; HPP1, TENB2,

TMEFF2, Tomoregulin 2, TPEF,

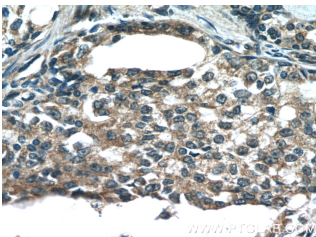
TR, TR 2



SH-SY5Y cells were subjected to SDS PAGE followed by western blot with 11928-1-AP (TMEFF2 antibody) at dilution of 1:300



Immunohistochemistry of paraffin-embedded human prostate cancer tissue slide using 11928-1-AP (TMEFF2 Antibody) at dilution of 1:100 (under 10x lens)



Immunohistochemistry of paraffin-embedded human prostate cancer tissue slide using 11928-1-AP (TMEFF2 Antibody) at dilution of 1:100 (under 40x lens)

### Applications

Tested applications:	ELISA, WB, IHC
Cited applications:	WB
Species specificity:	Human, Mouse, Rat; other species not tested.
Cited species:	Human
Calculated TMEFF2 MW:	374aa, 41 kDa
Observed TMEFF2 MW:	45-48 kDa
Positive WB detected in	SH-SY5Y cells, HeLa cells, human brain tissue, PC-3 cells
Positive IHC detected in	Human prostate cancer tissue, human prostate hyperplasia tissue
Recommended dilution:	WB: 1:200-1:2000 IHC: 1:20-1:200

Application key: WB = Western blotting, IHC = Immunohistochemistry, IF = Immunofluorescence, IP = Immunoprecipitation

### Immunogen information

Immunogen:	Ag2609
GenBank accession number:	BC008973
Gene ID (NCBI):	23671
Full name:	Transmembrane protein with EGF-like and two follistatin-like domains 2

### Product information

Purification method:	Antigen affinity purification
Storage:	PBS with 0.1% sodium azide and 50% glycerol pH 7.3. Store at -20°C.