

## GAPDH Polyclonal Antibody

Catalog number: 10494-1-AP

Size: 50 µg/150 µl

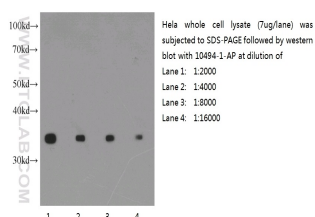
Source: Rabbit

Isotype: IgG

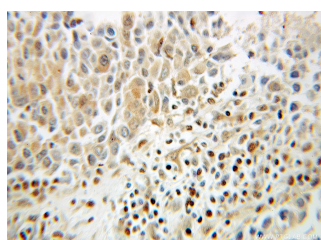
Synonyms:

GAPDH; G3PD, GAPD, GAPDH,

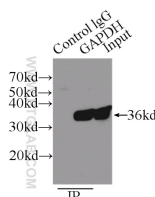
OK/SW cl.12



Western blot of HeLa cell with anti-GAPDH (10494-1-AP) at various dilutions.



Immunohistochemical of paraffin-embedded human breast cancer using 10494-1-AP (GAPDH antibody) at dilution of 1:100 (under 10x lens)



IP Result of anti-GAPDH (IP:10494-1-AP, 3ug; Detection:10494-1-AP 1:3000) with A549 cells lysate 3500ug.

### Background

Glyceraldehyde-3-phosphate dehydrogenase (GAPDH) catalyzes the phosphorylation of glyceraldehyde-3-phosphate during glycolysis. GAPDH participates in nuclear events including transcription, RNA binding, RNA transportation, DNA replication, DNA repair and apoptosis. Being stably and constitutively expressed at high levels in most tissues and cells, GAPDH is considered a housekeeping protein. It was widely used as a control for RT-PCR and also loading control in electrophoresis and Western blotting. GAPDH is normally expressed in cellular cytoplasm or membrane, but can occasionally translocated to the nucleus post modification such as S-nitrosylation. This antibody is a rabbit polyclonal antibody raised against full-length GAPDH of human origin. It can recognize the 36kDa GAPDH protein in most cells/tissues. Please note that some physiological factors, such as hypoxia and diabetes, increase GAPDH expression in certain cell types.

Read more about this antibody on the

blog: <http://blog.ptglab.com/index.php/gapdh-antibody-success-in-silkworm/>

### Applications

Tested applications:

ELISA, IHC, WB, IP, IF, FC

Cited applications:

IF, WB

Species specificity:

Human, Mouse, Rat, Pig; other species not tested.

Cited species:

Bombyx, human, monkey, monkey, mouse, mussel, pig, rat, Sea cucumbers, zebrafish

Calculated GAPDH MW:

36 kDa

Observed GAPDH MW:

36 kDa

Positive WB detected in

HeLa cells, A549 cells, HEK-293 cells, HepG2 cells, human testis tissue, Jurkat cells, K-562 cells, MDA-MB-453s cells, mouse heart tissue, mouse kidney tissue, mouse lung tissue, PC-13 cells, Raji cells, rat brain tissue

Positive IP detected in

A549 cells

Positive IHC detected in

Human breast cancer tissue, human lung cancer tissue

Positive IF detected in

HepG2 cells, HeLa cells

Positive FC detected in

HEK-293 cells

Recommended dilution:

WB: 1:2000-1:20000

IP: 1:1000-1:10000

IHC: 1:20-1:200

IF: 1:20-1:200

FC: N/A

Application key: WB = Western blotting, IHC = Immunohistochemistry, IF = Immunofluorescence, IP = Immunoprecipitation

### Immunogen information

Immunogen:

Ag0766

GenBank accession number:

BC004109

Gene ID (NCBI):

2597

Full name:

Glyceraldehyde-3-phosphate dehydrogenase

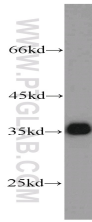
## Product information

**Purification method:**

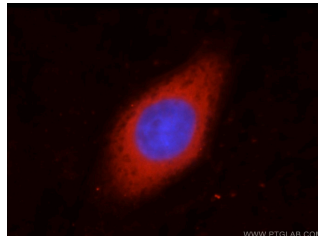
**Antigen affinity purification**

**Storage:**

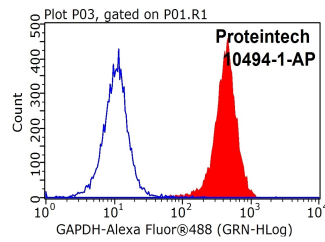
**PBS with 0.1% sodium azide and 50% glycerol pH 7.3. Store at -20°C.**



HeLa cells were subjected to SDS PAGE followed by western blot with 10494-1-AP(GAPDH antibody) at dilution of 1:5000



Immunofluorescent analysis of HepG2 cells, using GAPDH antibody 10494-1-AP at 1:50 dilution and Rhodamine-labeled goat anti-rabbit IgG (red). Blue pseudocolor = DAPI (fluorescent DNA dye).



1X10<sup>6</sup> HEK-293 cells were stained with .2ug GAPDH antibody (10494-1-AP, red) and control antibody (blue). Fixed with 90% MeOH blocked with 3% BSA (30 min). Alexa Fluor 488 -Goat anti-Rabbit IgG with dilution 1:100.