

ARHGEF18 Polyclonal Antibody

Catalog number: 11243-1-AP

Size: 37 µg/150 µl

Source: Rabbit

Isotype: IgG

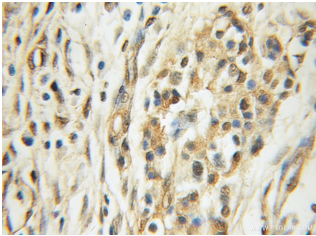
Synonyms:

ARHGEF18; ARHGEF18,
KIAA0521, p114 Rho GEF, P114

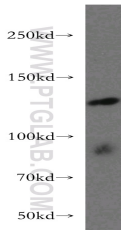
RhoGEF, p114RhoGEF, SA

RhoGEF, Septin associated

RhoGEF



Immunohistochemical of paraffin-embedded human pancreas cancer using 11243-1-AP (ARHGEF18 antibody) at dilution of 1:50 (under 10x lens)



mouse testis tissue were subjected to SDS PAGE followed by western blot with 11243-1-AP (ARHGEF18 antibody) at dilution of 1:300

Applications

Tested applications:	ELISA, WB, IHC
Species specificity:	Human, Mouse; other species not tested.
Calculated ARHGEF18 MW:	131 kDa
Observed ARHGEF18 MW:	120-130 kDa
Positive WB detected in	Mouse testis tissue
Positive IHC detected in	Human pancreas cancer tissue, human kidney tissue
Recommended dilution:	WB: 1:200-1:1000 IHC: 1:20-1:200

Application key: WB = Western blotting, IHC = Immunohistochemistry, IF = Immunofluorescence, IP = Immunoprecipitation

Immunogen information

Immunogen:	Ag1749
GenBank accession number:	BC014994
Gene ID (NCBI):	23370
Full name:	Rho/rac guanine nucleotide exchange factor (GEF) 18

Product information

Purification method:	Antigen affinity purification
Storage:	PBS with 0.02% sodium azide and 50% glycerol pH 7.3. Store at -20°C.