

## GPX7 Polyclonal Antibody

Catalog number: 13501-1-AP

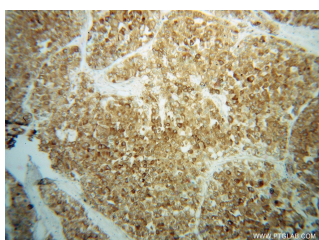
Size: 47 µg/150 µl

Source: Rabbit

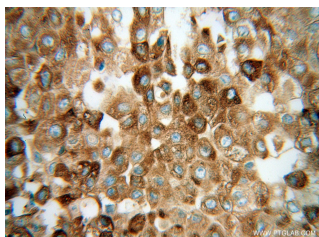
Isotype: IgG

Synonyms:

GPX7; CL683, FLJ14777,  
glutathione peroxidase 7, GPx  
7, GPX6, GPX7, GSHPx 7



Immunohistochemical of paraffin-embedded human liver cancer using 13501-1-AP(GPX7 antibody) at dilution of 1:100 (under 10x lens)



Immunohistochemical of paraffin-embedded human liver cancer using 13501-1-AP(GPX7 antibody) at dilution of 1:100 (under 40x lens)



human liver tissue were subjected to SDS PAGE followed by western blot with 13501-1-AP(GPX7 antibody) at dilution of 1:1000

### Background

GPX7(Glutathione peroxidase 7) is also named as GPX6,CL683,GSHPx-7 and belongs to the glutathione peroxidase family.It shares approximately 45% amino acid sequence with other GPX family members.Because GPX7 expression protected cells from acidic bile acidinduced DNA damage, it may protect oesophageal epithelial cells from acidic bile acid-induced apoptosis(PMID:22157330).

### Applications

<b>Tested applications:</b>	ELISA, WB, IHC
<b>Cited applications:</b>	WB
<b>Species specificity:</b>	Human; other species not tested.
<b>Cited species:</b>	Human, mouse
<b>Calculated GPX7 MW:</b>	187aa,21 kDa
<b>Observed GPX7 MW:</b>	21 kDa
<b>Positive WB detected in</b>	Human liver tissue, human brain tissue, Transfected HEK-293 cells
<b>Positive IHC detected in</b>	Human liver cancer tissue, human brain tissue
<b>Recommended dilution:</b>	WB: 1:500-1:5000 IHC: 1:20-1:200

Application key: WB = Western blotting, IHC = Immunohistochemistry, IF = Immunofluorescence, IP = Immunoprecipitation

### Immunogen information

<b>Immunogen:</b>	Ag4328
<b>GenBank accession number:</b>	BC032788
<b>Gene ID (NCBI):</b>	2882
<b>Full name:</b>	Glutathione peroxidase 7

### Product information

<b>Purification method:</b>	Antigen affinity purification
<b>Storage:</b>	PBS with 0.02% sodium azide and 50% glycerol pH 7.3. Store at -20°C.