

## MYDGF Polyclonal Antibody

Catalog number: 11353-1-AP

Size: 29 µg/150 µl

Source: Rabbit

Isotype: IgG

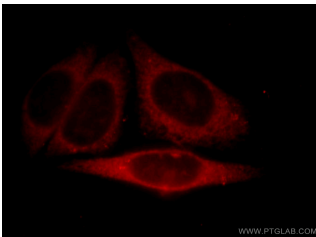
Synonyms:

C19orf10; C19orf10,

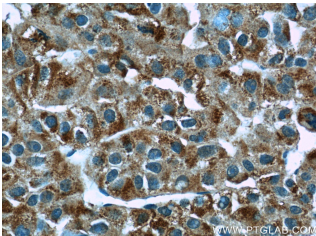
EUROIMAGE1875335,

R33729\_1, SF20, UPF0556

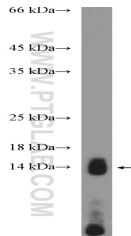
protein C19orf10



Immunofluorescent analysis of HepG2 cells, using C19orf10 antibody 11353-1-AP at 1:25 dilution and Rhodamine-labeled goat anti-rabbit IgG (red).



Immunohistochemistry of paraffin-embedded human liver cancer slide using 11353-1-AP (C19orf10 Antibody) at dilution of 1:50



DU 145 cells were subjected to SDS PAGE followed by western blot with 11353-1-AP (C19orf10 Antibody) at dilution of 1:300

### Background

C19orf10, also named as stromal cell-derived growth factor SF20, is an FLS-derived protein that is secreted into the synovial fluid.

### Applications

Tested applications:	ELISA, IF, IHC, WB
Species specificity:	Human, Mouse; other species not tested.
Calculated MYDGF MW:	173aa, 19 kDa
Observed MYDGF MW:	15-19 kDa
Positive WB detected in	DU 145 cells, COLO 320 cells, HeLa cells, Jurkat cells, Recombinant protein
Positive IHC detected in	Human liver cancer tissue, human colon cancer tissue, human lung cancer tissue
Positive IF detected in	HepG2 cells
Recommended dilution:	WB: 1:200-1:1000 IHC: 1:20-1:200 IF: 1:10-1:100

Application key: WB = Western blotting, IHC = Immunohistochemistry, IF = Immunofluorescence, IP = Immunoprecipitation

### Immunogen information

Immunogen:	Ag1900
GenBank accession number:	BC010129
Gene ID (NCBI):	56005
Full name:	Chromosome 19 open reading frame 10

### Product information

Purification method:	Antigen affinity purification
Storage:	PBS with 0.1% sodium azide and 50% glycerol pH 7.3. Store at -20°C.