

PLVAP Polyclonal Antibody

Catalog number: 14452-1-AP

Size: 20 µg/150 µl

Source: Rabbit

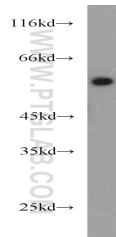
Isotype: IgG

Synonyms:

PLVAP; FELS, gp68,

Plasmalemma vesicle protein 1,

PLVAP, PV 1, PV1



HEK-293 cells were subjected to SDS PAGE followed by western blot with 14452-1-AP (PLVAP antibody) at dilution of 1:800

Applications

Tested applications:	ELISA, WB
Species specificity:	Human, Mouse; other species not tested.
Calculated PLVAP MW:	51 kDa
Observed PLVAP MW:	50-60kd
Positive WB detected in	HEK-293 cells, human kidney tissue, L02 cells, mouse liver tissue
Recommended dilution:	WB: 1:200-1:2000

Application key: WB = Western blotting, IHC = Immunohistochemistry, IF = Immunofluorescence, IP = Immunoprecipitation

Immunogen information

Immunogen:	Ag5963
GenBank accession number:	BC056414
Gene ID (NCBI):	83483
Full name:	Plasmalemma vesicle associated protein

Product information

Purification method:	Antigen affinity purification
Storage:	PBS with 0.02% sodium azide and 50% glycerol pH 7.3. Store at -20°C.