

CLTB Polyclonal Antibody

Catalog number: 10455-1-AP

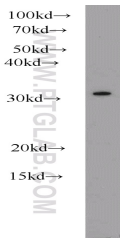
Size: 45 µg/150 µl

Source: Rabbit

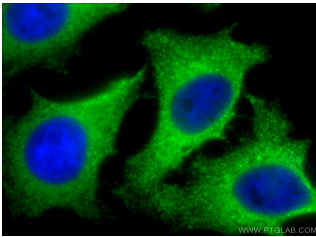
Isotype: IgG

Synonyms:

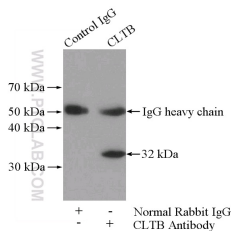
CLTB; Clathrin light chain B,
clathrin, light chain (Lcb), CLTB,
LCB



mouse thymus tissue were subjected to SDS PAGE followed by western blot with 10455-1-AP (CLTB antibody) at dilution of 1:1000



Immunofluorescent analysis of (10% Formaldehyde) fixed HeLa cells using 10455-1-AP (CLTB Antibody) at dilution of 1:100 and Alexa Fluor 488-conjugated AffiniPure Goat Anti-Rabbit IgG(H+L)



IP Result of anti-CLTB (IP:10455-1-AP, 4µg; Detection:10455-1-AP 1:500) with mouse brain tissue lysate 4000µg.

Background

Clathrin is the major protein of the polyhedral coat of coated pits and vesicles which entrap specific macromolecules during receptor-mediated endocytosis. The clathrin molecule has a triskelion shape. Each clathrin triskelion is composed of three identical heavy chains (180 kDa) and three light chains of two types, LCA (CLTA) and LCB (CLTB) (30-40 kDa). The light chain subunits are thought to regulate the formation or disassembly of clathrin coats. (PMID: 2445759; 8374173; 3563513)

Applications

Tested applications:	ELISA, WB, IP, IF
Species specificity:	Human, Mouse, Rat; other species not tested.
Calculated CLTB MW:	23 kDa
Observed CLTB MW:	32-38 kDa
Positive WB detected in	Mouse thymus tissue, human brain tissue, mouse brain tissue, PC-3 cells
Positive IP detected in	Mouse brain tissue
Positive IF detected in	HeLa cells, HEK-293 cells
Recommended dilution:	WB: 1:500-1:5000 IP: 1:200-1:2000 IF: 1:50-1:500

Application key: WB = Western blotting, IHC = Immunohistochemistry, IF = Immunofluorescence, IP = Immunoprecipitation

Immunogen information

Immunogen:	Ag0707
GenBank accession number:	BC006457
Gene ID (NCBI):	1212
Full name:	Clathrin, light chain (Lcb)

Product information

Purification method:	Antigen affinity purification
Storage:	PBS with 0.1% sodium azide and 50% glycerol pH 7.3. Store at -20°C.