

POPDC3 Polyclonal Antibody

Catalog number: 11800-1-AP

Size: 45 µg/150 µl

Source: Rabbit

Isotype: IgG

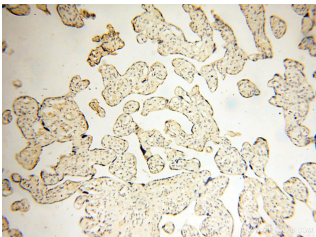
Synonyms:

POPDC3; bA355M14.1, POP3,

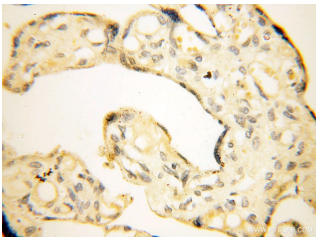
POPDC3, popeye domain

containing 3, Popeye protein 3,

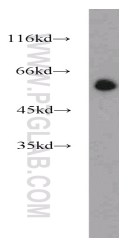
RP11 99L11.2



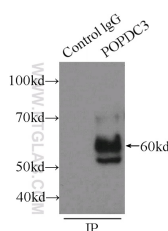
Immunohistochemical of paraffin-embedded human placenta using 11800-1-AP(POPDC3 antibody) at dilution of 1:50 (under 10x lens)



Immunohistochemical of paraffin-embedded human placenta using 11800-1-AP(POPDC3 antibody) at dilution of 1:50 (under 40x lens)



COLO 320 cells were subjected to SDS PAGE followed by western blot with 11800-1-AP(POPDC3 antibody) at dilution of 1:1000



IP Result of anti-POPDC3

Background

The Popeye domain-containing (POPDC) gene family includes BVES/POPDC1, POPDC2 and POPDC3. POPDC proteins are highly evolutionarily conserved transmembrane proteins expressed in embryonic epithelium, heart and muscle. POPDC3 is a 291-amino acid protein containing three putative transmembrane domains. It has been reported that POPDC3 expression is reduced in gastric cancer, suggesting it might play an important role in the progression and metastases of gastric cancer. (PMID: 10882522; 20627872; 22654436)

Applications

| | |
|--------------------------|--|
| Tested applications: | ELISA, WB, IHC, IP |
| Cited applications: | IHC, WB |
| Species specificity: | Human, Mouse, Rat; other species not tested. |
| Cited species: | Human |
| Calculated POPDC3 MW: | 34 kDa |
| Observed POPDC3 MW: | 60 kDa |
| Positive WB detected in | COLO 320 cells, HEK-293 cells |
| Positive IP detected in | HeLa cells |
| Positive IHC detected in | Human placenta tissue, human lung tissue, human spleen tissue, human testis tissue |
| Recommended dilution: | WB: 1:500-1:5000 IP: 1:500-1:5000 IHC: 1:20-1:200 |

Application key: WB = Western blotting, IHC = Immunohistochemistry, IF = Immunofluorescence, IP = Immunoprecipitation

Immunogen information

| | |
|---------------------------|----------------------------|
| Immunogen: | Ag2375 |
| GenBank accession number: | BC022323 |
| Gene ID (NCBI): | 64208 |
| Full name: | Popeye domain containing 3 |

Product information

| | |
|----------------------|---|
| Purification method: | Antigen affinity purification |
| Storage: | PBS with 0.1% sodium azide and 50% glycerol pH 7.3. Store at -20°C. |

**(IP:11800-1-AP, 3ug;
Detection:11800-1-AP 1:1000)
with HeLa cells lysate 220ug.**