

CAPS1 Polyclonal Antibody

Catalog number: 11490-2-AP

Size: 45 µg/150 µl

Source: Rabbit

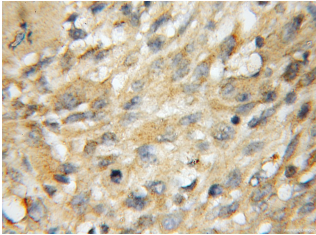
Isotype: IgG

Synonyms:

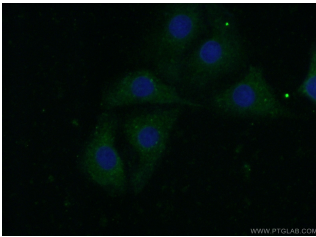
CADPS; CADPS, CADPS1,

CAPS, CAPS 1, CAPS1,

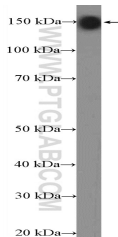
KIAA1121



Immunohistochemical of paraffin-embedded human gliomas using 11490-2-AP (CADPS antibody) at dilution of 1:50 (under 40x lens)



Immunofluorescent analysis of (-20 Acetone) fixed SH-SY5Y cells using 11490-2-AP (CADPS Antibody) at dilution of 1:50 and Alexa Fluor 488-conjugated AffiniPure Goat Anti-Rabbit IgG(H+L)



rat brain tissue were subjected to SDS PAGE followed by western blot with 11490-2-AP (CADPS Antibody) at dilution of 1:600

Applications

Tested applications:	ELISA, IHC, WB, IF
Species specificity:	Human, Rat; other species not tested.
Calculated CAPS1 MW:	1353aa, 153 kDa
Observed CAPS1 MW:	150 kDa
Positive WB detected in:	Rat brain tissue
Positive IHC detected in:	Human gliomas tissue, human pancreas tissue
Positive IF detected in:	SH-SY5Y cells
Recommended dilution:	WB: 1:200-1:2000
	IHC: 1:20-1:200
	IF: 1:50-1:500

Application key: WB = Western blotting, IHC = Immunohistochemistry, IF = Immunofluorescence, IP = Immunoprecipitation

Immunogen information

Immunogen:	Ag1975
GenBank accession number:	BC015754
Gene ID (NCBI):	8618
Full name:	Ca ⁺⁺ -dependent secretion activator

Product information

Purification method:	Antigen affinity purification
Storage:	PBS with 0.1% sodium azide and 50% glycerol pH 7.3. Store at -20°C.