

GRPEL1 Polyclonal Antibody

Catalog number: 12720-1-AP

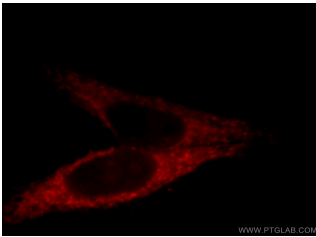
Size: 20 µg/150 µl

Source: Rabbit

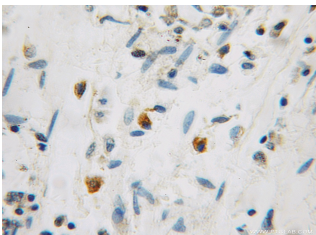
Isotype: IgG

Synonyms:

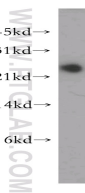
GRPEL1; FLJ25609, GREPEL1,
GRPEL1, HMGE, Mt GrpE#1



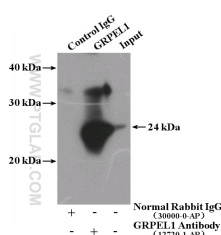
Immunofluorescent analysis of HepG2 cells, using GRPEL1 antibody 12720-1-AP at 1:25 dilution and Rhodamine-labeled goat anti-rabbit IgG (red).



Immunohistochemical of paraffin-embedded human colon cancer using 12720-1-AP (GRPEL1 antibody) at dilution of 1:100 (under 10x lens)



MCF7 cells were subjected to SDS PAGE followed by western blot with 12720-1-AP (GRPEL1 antibody) at dilution of 1:500



IP Result of anti-GRPEL1

(IP:12720-1-AP, 4µg;

Detection:12720-1-AP 1:600)

Applications

Tested applications:	ELISA, WB, IHC, IF, IP
Species specificity:	Human, Mouse, Rat; other species not tested.
Calculated GRPEL1 MW:	217aa, 24 kDa
Observed GRPEL1 MW:	24 kDa
Positive WB detected in	MCF7 cells
Positive IP detected in	MCF-7 cells
Positive IHC detected in	Human colon cancer tissue
Positive IF detected in	HepG2 cells
Recommended dilution:	WB: 1:200-1:2000
	IP: 1:200-1:2000
	IHC: 1:20-1:200
	IF: 1:10-1:100

Application key: WB = Western blotting, IHC = Immunohistochemistry, IF = Immunofluorescence, IP = Immunoprecipitation

Immunogen information

Immunogen:	Ag3415
GenBank accession number:	BC024242
Gene ID (NCBI):	80273
Full name:	GrpE-like 1, mitochondrial (E. coli)

Product information

Purification method:	Antigen affinity purification
Storage:	PBS with 0.1% sodium azide and 50% glycerol pH 7.3. Store at -20°C.

with MCF-7 cells lysate
1280ug.