

## Rift Valley Fever Virus (RVFV) Antibody

**Catalog #:** 01-0001

**Immunogen:** Sucrose purified virus (MP12 vaccine strain) from infected supernatant

**Description:** Rabbit polyclonal for RVFV

**Raised in:** New Zealand White Rabbits

**Purification:** Neat serum

**Clonality:** Polyclonal

**Buffer:** serum + 0.01% Azide

**Size:** 250ul

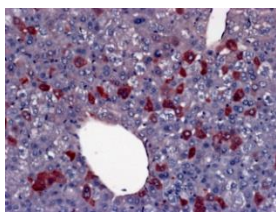
**Relevance:**

RVFV represents a surrogate strain for the Category A (NIAID) and USDA/HHS Select Agent Rift Valley Fever.

**Recommended Dilutions:**

ELISA: Assay-dependent dilution

IHC: Positive for detection of RVF in mouse liver

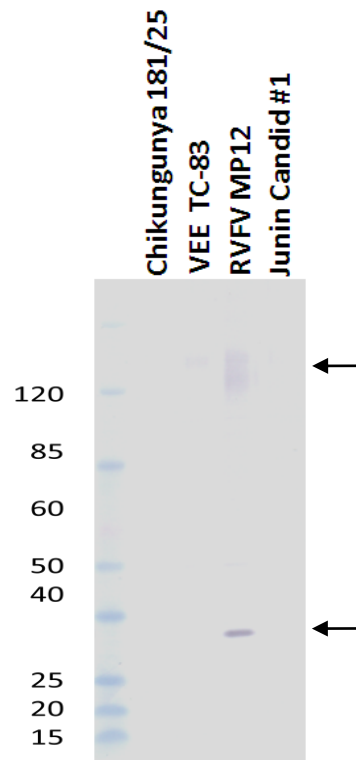


WB: Assay-dependent dilution. If probing against purified infected cell supernatant, cross-adsorption recommended.

IF: No Data

**Storage:** 2-3 weeks +4°C, -20°C long term

**Species Reactivity:** Does not react with Venezuelan Equine Encephalitis TC-83, Chikungunya 181/25, Vaccinia NYCBOH, or Junin Candid #1. Some cross-reactivity observed with fetal bovine serum and Vero cells



-Serum tested against sucrose purified infected cell-supernatant  
 -Serum diluted 1:10,000 and incubated with 2% FBS for 2hr  
 Prior to blotting

**Intended for research use only, not for human, therapeutic, or diagnostic applications.**  
*The buyer cannot sell or otherwise transfer this product for Commercial Purposes without written approval of Integrated BioTherapeutics, Inc.*  
**Copyright 2014. Integrated BioTherapeutics, Inc. All rights reserved.**