

MMS2 Polyclonal Antibody

Catalog number: 10689-1-AP

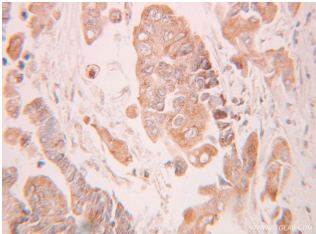
Size: 62 µg/150 µl

Source: Rabbit

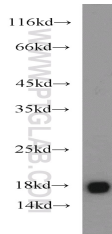
Isotype: IgG

Synonyms:

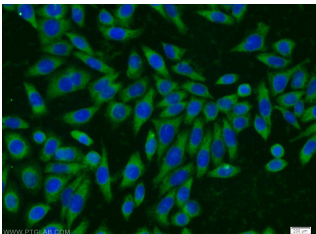
UBE2V2; DDvit 1, DDVIT1,
EDAF 1, EDPF 1, EDPF1,
MMS2, MMS2 homolog,
UB2V2, UBE2V2, UEV 2, UEV2,
Vitamin D3 inducible protein



Immunohistochemical of paraffin-embedded human colon cancer using 10689-1-AP(UBE2V2 antibody) at dilution of 1:100 (under 25x lens)



HEK-293 cells were subjected to SDS PAGE followed by western blot with 10689-1-AP(UBE2V2 antibody) at dilution of 1:1500



Immunofluorescent analysis of HeLa cells using 10689-1-AP(UBE2V2 Antibody) at dilution of 1:25 and Alexa Fluor 594-conjugated AffiniPure Goat Anti-Rabbit IgG(H+L)

Applications

Tested applications:	ELISA, WB, IHC, IF
Cited applications:	IF, WB
Species specificity:	Human, Mouse, Rat; other species not tested.
Cited species:	Human
Calculated MMS2 MW:	16 kDa
Observed MMS2 MW:	16-20 kDa
Positive WB detected in	HEK-293 cells, A375 cells, HeLa cells, HL-60 cells, human brain tissue, Jurkat cells, K-562 cells, rat liver tissue
Positive IHC detected in	Human colon cancer tissue, human colon tissue
Positive IF detected in	HeLa cells, HEK-293 cells
Recommended dilution:	WB: 1:500-1:5000 IHC: 1:20-1:200 IF: 1:10-1:100

Application key: WB = Western blotting, IHC = Immunohistochemistry, IF = Immunofluorescence, IP = Immunoprecipitation

Immunogen information

Immunogen:	Ag1111
GenBank accession number:	BC007051
Gene ID (NCBI):	7336
Full name:	Ubiquitin-conjugating enzyme E2 variant 2

Product information

Purification method:	Antigen affinity purification
Storage:	PBS with 0.1% sodium azide and 50% glycerol pH 7.3. Store at -20°C.