

TRPV6 Polyclonal Antibody

Catalog number: 13411-1-AP

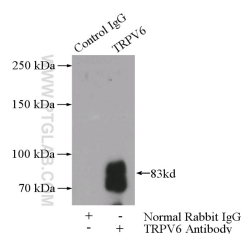
Size: 73 µg/150 µl

Source: Rabbit

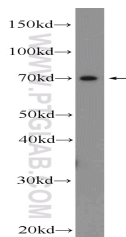
Isotype: IgG

Synonyms:

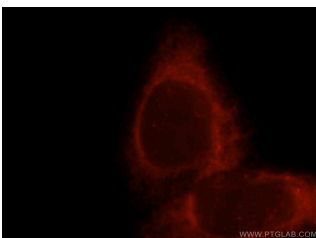
TRPV6; ABP/ZF, Calcium transport protein 1, CaT L, CaT like, CAT1, CATL, ECAC2, Epithelial calcium channel 2, HSA277909, LP6728, TRPV6, ZFAB



IP Result of anti-TRPV6 (IP:13411-1-AP, 4µg; Detection:13411-1-AP 1:300) with mouse kidney tissue lysate 4000µg.



human placenta tissue were subjected to SDS PAGE followed by western blot with 13411-1-AP (TRPV6 Antibody) at dilution of 1:1000



Immunofluorescent analysis of HeLa cells, using TRPV6 antibody 13411-1-AP at 1:25 dilution and Rhodamine-labeled goat anti-rabbit IgG (red).

Background

TRPV6, also named as CAT1 or ECAC2, is a member of the transient receptor potential (TRP) family of membrane proteins. Unlike most TRP channels, TRPV6 and its closest relative, TRPV5, are calcium-selective channels. TRPV6 is highly expressed in the proximal intestine, placenta and exocrine tissues (PMID: 12869611). It is probably involved in calcium absorption in various tissues, including calcium reabsorption in kidney. TRPV6 is overexpressed in some cancers and exhibits oncogenic potential.

Applications

Tested applications:	ELISA, IF, WB, IP
Cited applications:	IF, WB
Species specificity:	Human, Mouse, Rat; other species not tested.
Cited species:	Human
Calculated TRPV6 MW:	725aa, 83 kDa
Observed TRPV6 MW:	83 kDa, 70 kDa
Positive WB detected in	Human placenta tissue, mouse kidney tissue, PC-3 cells
Positive IP detected in	Mouse kidney tissue
Positive IF detected in	Hela cells
Recommended dilution:	WB: 1:500-1:5000 IP: 1:200-1:1000 IF: 1:10-1:100

Application key: WB = Western blotting, IHC = Immunohistochemistry, IF = Immunofluorescence, IP = Immunoprecipitation

Immunogen information

Immunogen:	Ag4060
GenBank accession number:	BC034814
Gene ID (NCBI):	55503
Full name:	Transient receptor potential cation channel, subfamily V, member 6

Product information

Purification method:	Antigen affinity purification
Storage:	PBS with 0.02% sodium azide and 50% glycerol pH 7.3. Store at -20°C.