

CTDSP2 Polyclonal Antibody

Catalog number: 11116-1-AP

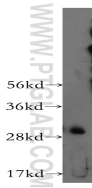
Size: 20 µg/150 µl

Source: Rabbit

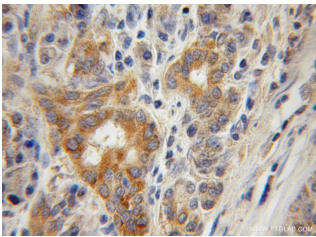
Isotype: IgG

Synonyms:

CTDSP2; OS4; PSR2; SCP2



human kidney tissue were subjected to SDS PAGE followed by western blot with 11116-1-AP(CTDSP2 Antibody) at dilution of 1:400



Immunohistochemistry of paraffin-embedded human pancreas cancer using 11116-1-AP(CTDSP2 Antibody) at Dilution 1:50 (under 10x lens)

Background

CTDSPs are C-class phosphatases that act on Ser 5 of the Pol II C-terminal domain (CTD) to decrease transcription [PMID:15681389]. CTDSP enzymatic activity is required for REST function, and knockdown of CTDSP induces the neuronal differentiation of mouse embryonic carcinoma P19 cells. CTDSP2 has been shown to enhance TGF-β signaling by the dephosphorylation of SMAD proteins and attenuates androgen receptor-mediated transcription [PMID:16724108]. It negatively regulates RNA polymerase II transcription by controlling the transition from initiation/capping to processive transcript elongation. It was recruited by REST to neuronal genes that contain RE-1 elements, leading to neuronal gene silencing in non-neuronal cells [PMID: 12721286].

Applications

Tested applications:	ELISA, WB, IHC
Species specificity:	Human; other species not tested.
Positive WB detected in:	Human kidney tissue, HepG2 cells, K-562 cells
Calculated CTDSP2 MW:	31kd
Observed CTDSP2 MW:	31 kDa
Positive IHC detected in:	Human pancreas cancer
Recommended dilution:	WB: 1:200-1:1000 IHC: 1:20-1:200

Application key: WB = Western blotting, IHC = Immunohistochemistry, IF = Immunofluorescence, IP = Immunoprecipitation, FC = Flow cytometry

Immunogen information

Immunogen:	Ag1601
GenBank accession number:	BC065920
Gene ID (NCBI):	10106
Full name:	CTD (carboxy-terminal domain, RNA polymerase II, polypeptide A) small phosphatase 2

Product information

Purification method:	Antigen affinity purification
Storage:	PBS with 0.1% sodium azide and 50% glycerol pH 7.3. Store at -20°C.