

SUMO2/3 Polyclonal Antibody

Catalog number: 11251-1-AP

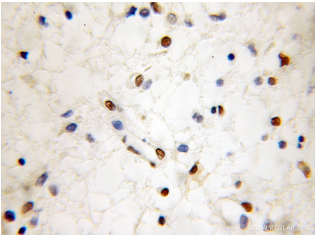
Size: 37 µg/150 µl

Source: Rabbit

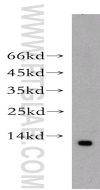
Isotype: IgG

Synonyms:

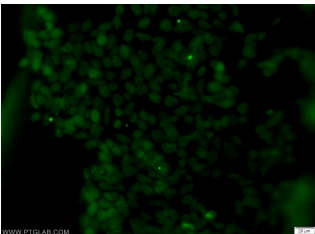
SUMO2; HSMT3, Sentrin 2,
SMT3 homolog 2, SMT3B,
SMT3H2, SUMO 2, SUMO 3,
SUMO2, SUMO3, Ubiquitin like
protein SMT3B



Immunohistochemical of paraffin-embedded human gliomas using 11251-1-AP(SUMO2/3 antibody) at dilution of 1:50 (under 10x lens)



Apoptosed HeLa cells were subjected to SDS PAGE followed by western blot with 11251-1-AP(SUMO2/3 antibody) at dilution of 1:100



Immunofluorescent analysis of HEK-293 cells using 11251-1-AP(SUMO2/3 Antibody) at dilution of 1:50 and Alexa Fluor 488-conjugated AffiniPure Goat Anti-Rabbit IgG(H+L)

Background

Ubiquitin is most famous for its function in targeting proteins for degradation by the 26S proteasome, ubiquitin needs to be attached to a substrate in chains (polyubiquitylation) before being recognized by proteasome. Similarly, SUMO (small ubiquitin-related modifier) can be linked to substrates in chains (polysumoylation), SUMO modification has been implicated in many important cellular processes including the control of genome stability, signal transduction, targeting to and formation of nuclear compartments, cell cycle and meiosis. There are 4 confirmed SUMO isoforms in human, SUMO-1, SUMO-2, SUMO-3 and SUMO-4. SUMO-2 and SUMO-3 are nearly identical but are distinct from SUMO-1. SUMO2/3 conjugation was recently widely involved in neuroprotective activities. A substitution (M55V) of SUMO4 was strongly associated with the pathogenesis of type 1 diabetes (T1D) involving NF kappa B related mechanisms.

Applications

Tested applications:	ELISA, WB, IHC, IF
Species specificity:	Human; other species not tested.
Calculated SUMO2/3 MW:	11 kDa
Observed SUMO2/3 MW:	11-14kd
Positive WB detected in	Apoptosed HeLa cells, Recombinant protein
Positive IHC detected in	Human gliomas tissue
Positive IF detected in	HEK-293 cells
Recommended dilution:	WB: 1:200-1:1000
	IHC: 1:20-1:200
	IF: 1:20-1:200

Application key: WB = Western blotting, IHC = Immunohistochemistry, IF = Immunofluorescence, IP = Immunoprecipitation

Immunogen information

Immunogen:	Ag1778
GenBank accession number:	BC016775
Gene ID (NCBI):	6613
Full name:	SMT3 suppressor of mif two 3 homolog 2 (S. cerevisiae)

Product information

Purification method:	Antigen affinity purification
Storage:	PBS with 0.02% sodium azide and 50% glycerol pH 7.3. Store at -20°C.