

RERG Polyclonal Antibody

Catalog number: 10687-1-AP

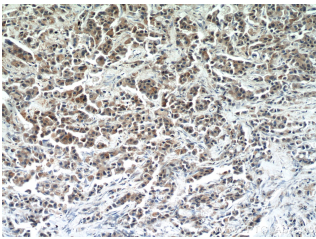
Size: 30 µg/150 µl

Source: Rabbit

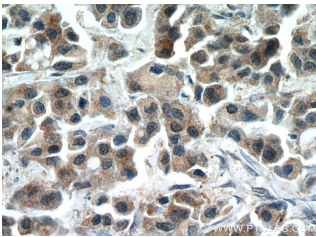
Isotype: IgG

Synonyms:

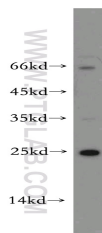
RERG; RERC, RERG



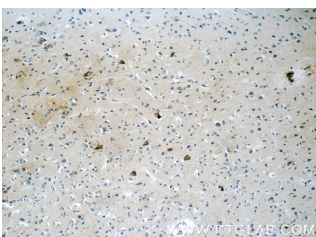
Immunohistochemical of paraffin-embedded human breast cancer using 10687-1-AP (RERG antibody) at dilution of 1:50 (under 10x lens)



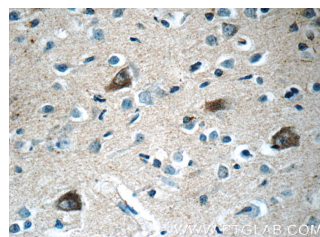
Immunohistochemical of paraffin-embedded human breast cancer using 10687-1-AP (RERG antibody) at dilution of 1:50 (under 40x lens)



MCF7 cells were subjected to SDS PAGE followed by western blot with 10687-1-AP (RERG antibody) at dilution of 1:1000



Immunohistochemistry of paraffin-embedded human brain tissue slide using 10687-1-AP (RERG Antibody) at dilution of 1:200



Immunohistochemistry of paraffin-embedded human brain tissue slide using 10687-1-AP (RERG Antibody) at dilution of 1:200

Background

RERG (Ras-related and estrogen-regulated growth inhibitor), a gene that encodes a small GTP binding and hydrolyzing protein (GTPase) of the Ras superfamily, is a novel gene that was first reported in breast cancer. RERG gene expression is stimulated by the estrogen receptor alpha (ERalpha), and RERG gene expression is absent in ER-negative breast cancer. RERG can bind and hydrolyze GTP as a GTP/GDP molecular switch, and RERG has been shown to possess growth inhibitory activity in breast cancer cells.

Applications

Tested applications:	ELISA, WB, IHC
Cited applications:	IHC
Species specificity:	Human, Mouse; other species not tested.
Cited species:	Human
Calculated RERG MW:	23 kDa
Observed RERG MW:	23-26 kDa
Positive WB detected in:	MCF7 cells, NIH/3T3 cells
Positive IHC detected in:	Human breast cancer tissue, human brain tissue, human liver cancer tissue, human placenta tissue, human skin tissue
Recommended dilution:	WB: 1:500-1:5000 IHC: 1:20-1:200

Application key: WB = Western blotting, IHC = Immunohistochemistry, IF = Immunofluorescence, IP = Immunoprecipitation

Immunogen information

Immunogen:	Ag1041
GenBank accession number:	BC007997
Gene ID (NCBI):	85004
Full name:	RAS-like, estrogen-regulated, growth inhibitor

Product information

Purification method:	Antigen affinity purification
Storage:	PBS with 0.02% sodium azide and 50% glycerol pH 7.3. Store at -20°C.

dilution of 1:50 (under 10x lens)

dilution of 1:50 (under 40x lens)