

LANCL1 Polyclonal Antibody

Catalog number: 12647-1-AP

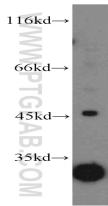
Size: 36 µg/150 µl

Source: Rabbit

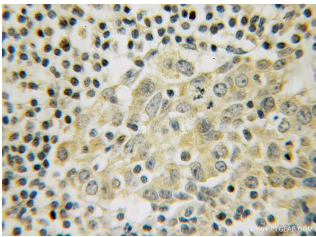
Isotype: IgG

Synonyms:

LANCL1; GPR69A; p40



mouse brain tissue were subjected to SDS PAGE followed by western blot with 12647-1-AP(LANCL1 Antibody) at dilution of 1:500



Immunohistochemistry of paraffin-embedded human breast cancer using 12647-1-AP(LANCL1 Antibody) at Dilution 1:50 (under 10x lens)

Applications

Tested applications:	ELISA, WB, IHC
Species specificity:	Human, mouse, rat; other species not tested.
Positive WB detected in:	Mouse brain tissue, human heart tissue
Calculated LANCL1 MW:	399aa,45kd
Observed LANCL1 MW:	45kd
Positive IHC detected in:	Human breast cancer
Recommended dilution:	WB: 1:200-1:2000 IHC: 1:20-1:200

Application key: WB = Western blotting, IHC = Immunohistochemistry, IF = Immunofluorescence, IP = Immunoprecipitation, FC = Flow cytometry

Immunogen information

Immunogen:	Ag3361
GenBank accession number:	BC028685
Gene ID (NCBI):	10314
Full name:	LanC lantibiotic synthetase component C-like 1 (bacterial)

Product information

Purification method:	Antigen affinity purification
Storage:	PBS with 0.02% sodium azide and 50% glycerol pH 7.3. Store at -20°C.