

RhoGDI Polyclonal Antibody

Catalog number: 10509-1-Ig

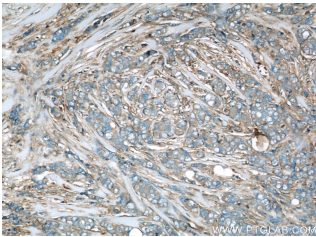
Size: 90 µg/150 µl

Source: Rabbit

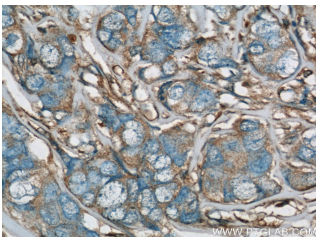
Isotype: IgG

Synonyms:

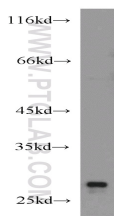
ARHGDI, aGDI, ARHGDI, GDIA1, Rho GDI 1, Rho GDI alpha, RHOGDI, RHOGDI 1



Immunohistochemical of paraffin-embedded human breast cancer using 10509-1-Ig(ARHGDI, aGDI antibody) at dilution of 1:50 (under 10x lens)



Immunohistochemical of paraffin-embedded human breast cancer using 10509-1-Ig(ARHGDI, aGDI antibody) at dilution of 1:50 (under 40x lens)



Jurkat cells were subjected to SDS PAGE followed by western blot with 10509-1-Ig(ARHGDI, aGDI antibody) at dilution of 1:1000

Background

Aplysia Ras-related homologs (ARHs), also called Rho genes, belong to the RAS gene superfamily encoding small guanine nucleotide exchange (GTP/GDP) factors. The ARH proteins may be kept in the inactive, GDP-bound state by interaction with GDP dissociation inhibitors, such as ARHGDI (also called Rho GDP-dissociation inhibitor 1, Rho GDI1). Rho GDI1 acts as a metastasis-related protein in colon and prostate cancer patients and may be useful as a diagnostic biomarker to prevent colon and prostate cancer metastasis.

Applications

Tested applications:	ELISA, WB, IHC
Cited applications:	IHC, WB
Species specificity:	Human, Mouse, Rat; other species not tested.
Cited species:	Human, rat
Calculated RhoGDI MW:	28 kDa
Observed RhoGDI MW:	28 kDa
Positive WB detected in	Jurkat cells, A431 cells, HEK-293 cells, HeLa cells, HL-60 cells, mouse pancreas tissue
Positive IHC detected in	Human breast cancer tissue, human colon cancer tissue
Recommended dilution:	WB: 1:500-1:5000 IHC: 1:20-1:200

Application key: WB = Western blotting, IHC = Immunohistochemistry, IF = Immunofluorescence, IP = Immunoprecipitation

Immunogen information

Immunogen:	Ag0791
GenBank accession number:	BC005851
Gene ID (NCBI):	396
Full name:	Rho GDP dissociation inhibitor (GDI) alpha

Product information

Purification method:	Protein A purification
Storage:	PBS with 0.1% sodium azide and 50% glycerol pH 7.3. Store at -20°C.