

## ADAP1 Polyclonal Antibody

Catalog number: 13911-1-AP

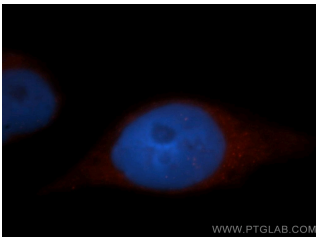
Size: 34 µg/150 µl

Source: Rabbit

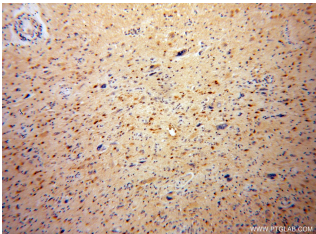
Isotype: IgG

Synonyms:

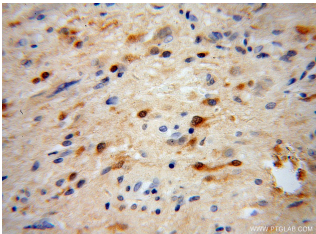
ADAP1; ADAP1, ArfGAP with dual PH domains 1, CENTA1, Centaurin alpha 1, Cnt a1, GCS1L, p42IP4



Immunofluorescent analysis of MCF-7 cells, using ADAP1 antibody 13911-1-AP at 1:50 dilution and Rhodamine-labeled goat anti-rabbit IgG (red). Blue pseudocolor = DAPI (fluorescent DNA dye).



Immunohistochemical of paraffin-embedded human gliomas using 13911-1-AP (ADAP1 antibody) at dilution of 1:100 (under 10x lens)



Immunohistochemical of paraffin-embedded human gliomas using 13911-1-AP (ADAP1 antibody) at dilution of 1:100 (under 40x lens)

### Applications

Tested applications:	ELISA, WB, IHC, IF
Species specificity:	Human, Mouse, Rat; other species not tested.
Calculated ADAP1 MW:	374aa, 43kd
Observed ADAP1 MW:	43kd
Positive WB detected in	Human brain tissue
Positive IHC detected in	Human gliomas tissue
Positive IF detected in	MCF-7 cells, Hela cells
Recommended dilution:	WB: 1:500 - 1:2000 IHC: 1:50 - 1:200 IF: 1:25 - 1:100

Application key: WB = Western blotting, IHC = Immunohistochemistry, IF = Immunofluorescence, IP = Immunoprecipitation

### Immunogen information

Immunogen:	Ag4898
GenBank accession number:	BC033747
Gene ID (NCBI):	11033
Full name:	ArfGAP with dual PH domains 1

### Product information

Purification method:	Antigen affinity purification
Storage:	PBS with 0.02% sodium azide and 50% glycerol pH 7.3. Store at -20°C.