

NCL Polyclonal Antibody

Catalog number: 10556-1-AP

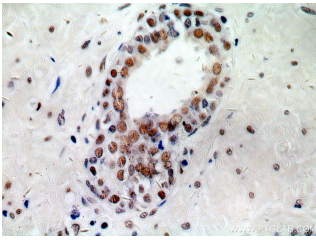
Size: 36 µg/150 µl

Source: Rabbit

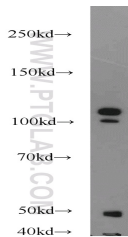
Isotype: IgG

Synonyms:

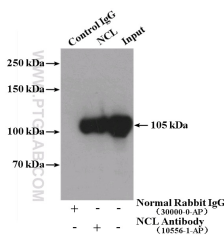
NCL; C23, FLJ45706, NCL,
nucleolin, Protein C23



Immunohistochemical of paraffin-embedded human prostate cancer using 10556-1-AP (NCL antibody) at dilution of 1:100 (under 40x lens)



HEK-293 cells were subjected to SDS PAGE followed by western blot with 10556-1-AP (NCL antibody) at dilution of 1:2000



IP Result of anti-NCL (IP:10556-1-AP, 4ug; Detection:10556-1-AP 1:1000) with HeLa cells lysate 3200ug.

Background

Nucleolin, also known as C23, involved in the control of transcription of ribosomal RNA (rRNA) genes by RNA polymerase I, in nucleocytoplasmic transportation of ribosomal components, and in ribosome maturation and assembly. It associated with intranucleolar chromatin and pre-ribosomal particles, and induced chromatin decondensation by binding to histone H1. Also it has a role in the process of transcriptional elongation.

Applications

Tested applications:	ELISA, WB, IHC, IP
Cited applications:	IF, IHC, IP, WB
Species specificity:	Human, Mouse, Rat; other species not tested.
Cited species:	Human, insect, mouse, rat
Calculated NCL MW:	76 kDa
Observed NCL MW:	100-110 kDa
Positive WB detected in	HEK-293 cells, rat brain tissue
Positive IP detected in	HeLa cells
Positive IHC detected in	Human prostate cancer tissue, human cervical cancer tissue, human prostate hyperplasia tissue
Recommended dilution:	WB: 1:1000-1:10000
	IP: 1:500-1:5000
	IHC: 1:20-1:200

Application key: WB = Western blotting, IHC = Immunohistochemistry, IF = Immunofluorescence, IP = Immunoprecipitation

Immunogen information

Immunogen:	Ag0859
GenBank accession number:	BC006494
Gene ID (NCBI):	4691
Full name:	Nucleolin

Product information

Purification method:	Antigen affinity purification
Storage:	PBS with 0.1% sodium azide and 50% glycerol pH 7.3. Store at -20°C.