

## DNASE1L1 Polyclonal Antibody

Catalog number: 13653-1-AP

Size: 32 µg/150 µl

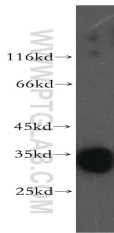
Source: Rabbit

Isotype: IgG

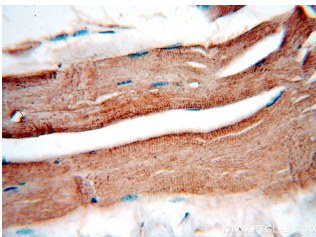
Synonyms:

DNASE1L1; DNASE1L1;

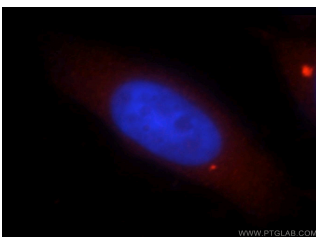
DNASEX; DNL1L; XIB



mouse skeletal muscle tissue were subjected to SDS PAGE followed by western blot with 13653-1-AP (DNASE1L1 Antibody) at dilution of 1:800



Immunohistochemistry of paraffin-embedded human skeletal muscle using 13653-1-AP (DNASE1L1 Antibody) at Dilution 1:50 (under 40x lens)



Immunofluorescent analysis of MCF-7 cells, using DNASE1L1 antibody 13653-1-AP at 1:25 dilution and Rhodamine-labeled goat anti-rabbit IgG (red). Blue pseudocolor = DAPI (fluorescent DNA dye).

### Applications

<b>Tested applications:</b>	ELISA, WB, IHC, IF
<b>Species specificity:</b>	Human, mouse, rat; other species not tested.
<b>Positive WB detected in:</b>	Mouse skeletal muscle tissue
<b>Calculated DNASE1L1 MW:</b>	302aa, 34kd
<b>Observed DNASE1L1 MW:</b>	34kd
<b>Positive IHC detected in:</b>	Human skeletal muscle
<b>Positive IF detected in:</b>	MCF-7 cells
<b>Recommended dilution:</b>	WB: 1:200-1:2000 IHC: 1:20-1:200 IF: 1:20-1:50

Application key: WB = Western blotting, IHC = Immunohistochemistry, IF = Immunofluorescence, IP = Immunoprecipitation, FC = Flow cytometry

### Immunogen information

<b>Immunogen:</b>	Ag4222
<b>GenBank accession number:</b>	BC028092
<b>Gene ID (NCBI):</b>	1774
<b>Full name:</b>	Deoxyribonuclease I-like 1

### Product information

<b>Purification method:</b>	Antigen affinity purification
<b>Storage:</b>	PBS with 0.02% sodium azide and 50% glycerol pH 7.3. Store at -20°C.