

SIRP BETA 1 Polyclonal Antibody

Catalog number: 11811-1-AP

Size: 20 µg/150 µl

Source: Rabbit

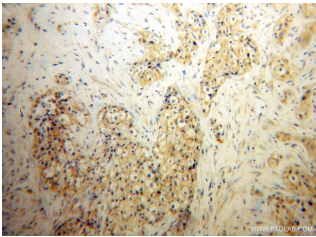
Isotype: IgG

Synonyms:

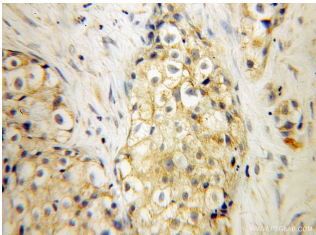
SIRPB1; CD172b,

DKFZp686A05192, FLJ26614,

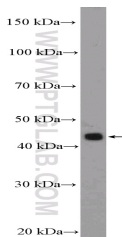
SIRP BETA 1, SIRPB1



Immunohistochemical of paraffin-embedded human lung cancer using 11811-1-AP(SIRPB1 antibody) at dilution of 1:50 (under 10x lens)



Immunohistochemical of paraffin-embedded human lung cancer using 11811-1-AP(SIRPB1 antibody) at dilution of 1:50 (under 40x lens)



U-937 cells were subjected to SDS PAGE followed by western blot with 11811-1-AP(SIRPB1 Antibody) at dilution of 1:1000

Background

SIRPB1 is a member of the signal-regulatory-protein (SIRP) family, and also belongs to the immunoglobulin superfamily. SIRP family members are cell surface signaling receptors differentially expressed in leukocytes and the central nervous system. SIRPB1 interacts with TYROBP/DAP12, a protein bearing immunoreceptor tyrosine-based activation motifs. It also participates in the recruitment of tyrosine kinase SYK.

Applications

Tested applications:	ELISA, IHC, WB
Cited applications:	IHC
Species specificity:	Human; other species not tested.
Cited species:	Human
Calculated SIRP BETA 1 MW:	43 kDa
Observed SIRP BETA 1 MW:	43 kDa
Positive WB detected in	U-937 cells, A375 cells, PC-3 cells
Positive IHC detected in	Human lung cancer tissue
Recommended dilution:	WB: 1:500-1:5000 IHC: 1:20-1:200

Application key: WB = Western blotting, IHC = Immunohistochemistry, IF = Immunofluorescence, IP = Immunoprecipitation

Immunogen information

Immunogen:	Ag2478
GenBank accession number:	BC025286
Gene ID (NCBI):	10326
Full name:	Signal-regulatory protein beta 1

Product information

Purification method:	Antigen affinity purification
Storage:	PBS with 0.1% sodium azide and 50% glycerol pH 7.3. Store at -20°C.