

## SERPINA10 Polyclonal Antibody

Catalog number: 11851-1-AP

Size: 22 µg/150 µl

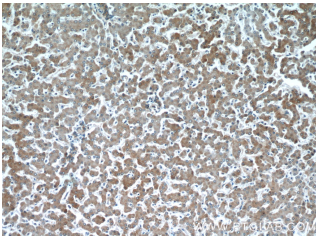
Source: Rabbit

Isotype: IgG

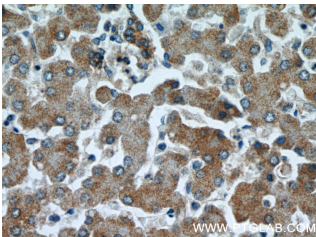
Synonyms:

SERPINA10; PZI, Serpin A10,

SERPINA10, ZPI



Immunohistochemical of paraffin-embedded human liver using 11851-1-AP (SERPINA10 antibody) at dilution of 1:100 (under 10x lens)



Immunohistochemical of paraffin-embedded human liver using 11851-1-AP (SERPINA10 antibody) at dilution of 1:100 (under 40x lens)

### Applications

Tested applications:	ELISA, WB, IHC, IP, IF
Species specificity:	Human, Mouse, Rat; other species not tested.
Calculated SERPINA10 MW:	444aa, 51 kDa
Observed SERPINA10 MW:	72 kDa, 68 kDa, 50-55 kDa
Positive WB detected in	Human liver tissue, HepG2 cells, L02 cells, mouse liver tissue, RAW 264.7 cells
Positive IP detected in	L02 cells
Positive IHC detected in	Human liver tissue
Positive IF detected in	L02 cells, HepG2 cells
Recommended dilution:	WB: 1:500-1:5000 IP: 1:500-1:5000 IHC: 1:20-1:200 IF: 1:20-1:200

Application key: WB = Western blotting, IHC = Immunohistochemistry, IF = Immunofluorescence, IP = Immunoprecipitation

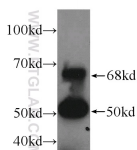
### Immunogen information

Immunogen:	Ag2420
GenBank accession number:	BC022261
Gene ID (NCBI):	51156
Full name:	Serpin peptidase inhibitor, clade A (alpha-1 antiproteinase, antitrypsin), member 10

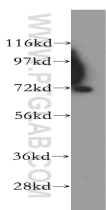
### Product information

Purification method:	Antigen affinity purification
Storage:	PBS with 0.1% sodium azide and 50% glycerol pH 7.3. Store at -20°C.

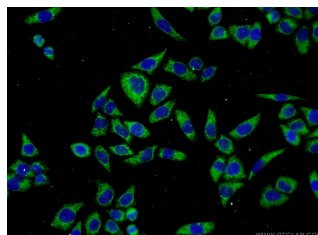
IP result of SERPINA10



IP Result of anti-SERPINA10  
(IP: 11851-1-AP, 3 µg; Detection: 11851-1-AP 1:1000) with L02 cells lysate 2500 µg.



human liver tissue were subjected to SDS PAGE followed by western blot with



Immunofluorescent analysis of L02 cells using 11851-1-AP (SERPINA10 Antibody) at

**11851-1-AP(SERPINA10  
antibody) at dilution of 1:500**      **dilution of 1:50 and Alexa  
Fluor 488-conjugated  
AffiniPure Goat Anti-Rabbit  
IgG(H+L)**