

COX15 Polyclonal Antibody

Catalog number: 11441-1-AP

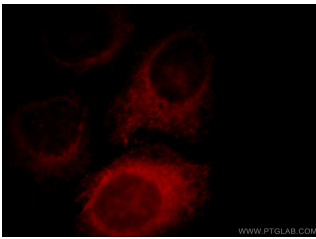
Size: 49 µg/150 µl

Source: Rabbit

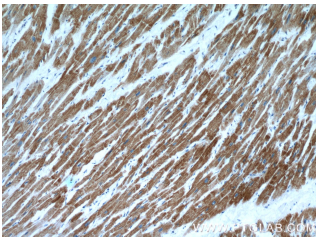
Isotype: IgG

Synonyms:

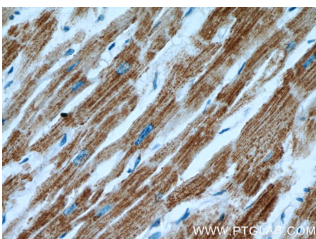
COX15; COX15



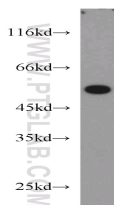
Immunofluorescent analysis of HepG2 cells, using COX15 antibody 11441-1-AP at 1:25 dilution and Rhodamine-labeled goat anti-rabbit IgG (red).



Immunohistochemical of paraffin-embedded human heart using 11441-1-AP(COX15 antibody) at dilution of 1:100 (under 10x lens)



Immunohistochemical of paraffin-embedded human heart using 11441-1-AP(COX15 antibody) at dilution of 1:100 (under 40x lens)



mouse skeletal muscle tissue were subjected to SDS PAGE followed by western blot with 11441-1-AP(COX15 antibody)

Background

COX15 belongs to the COX15/CtaA family. It may be involved in the biosynthesis of heme A. COX15 has 2 isoforms COX15.1 and COX15.2. The MW in SDS-PAGE is between 44kd and 55kd.

Applications

Tested applications:	ELISA, WB, IHC, IF
Species specificity:	Human, Mouse, Rat; other species not tested.
Calculated COX15 MW:	410aa, 46 kDa
Observed COX15 MW:	44-55 kDa
Positive WB detected in	Mouse skeletal muscle tissue, mouse brain tissue, mouse heart tissue
Positive IHC detected in	Human heart tissue
Positive IF detected in	HepG2 cells
Recommended dilution:	WB: 1:500-1:5000 IHC: 1:20-1:200 IF: 1:10-1:100

Application key: WB = Western blotting, IHC = Immunohistochemistry, IF = Immunofluorescence, IP = Immunoprecipitation

Immunogen information

Immunogen:	Ag2004
GenBank accession number:	BC002382
Gene ID (NCBI):	1355
Full name:	COX15 homolog, cytochrome c oxidase assembly protein (yeast)

Product information

Purification method:	Antigen affinity purification
Storage:	PBS with 0.1% sodium azide and 50% glycerol pH 7.3. Store at -20°C.

at dilution of 1:1000