

S100A16 Polyclonal Antibody

Catalog number: 11456-1-AP

Size: 38 µg/150 µl

Source: Rabbit

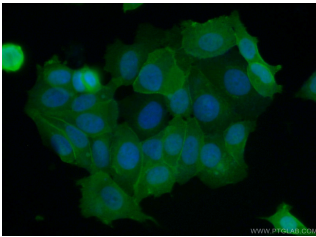
Isotype: IgG

Synonyms:

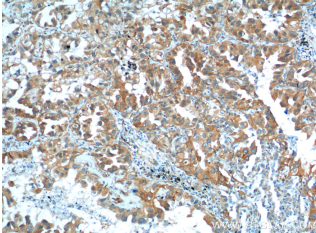
S100A16; AAG13, DT1P1A7,

Protein S100 A16, Protein S100

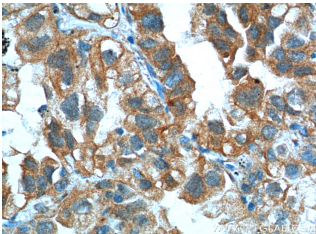
F, S100A16, S100F



Immunofluorescent analysis of (10% Formaldehyde) fixed MCF-7 cells using 11456-1-AP (S100A16 Antibody) at dilution of 1:50 and Alexa Fluor 488-conjugated AffiniPure Goat Anti-Rabbit IgG(H+L)



Immunohistochemistry of paraffin-embedded human lung cancer tissue slide using 11456-1-AP (S100A16 Antibody) at dilution of 1:200 (under 10x lens).



Immunohistochemistry of paraffin-embedded human lung cancer tissue slide using 11456-1-AP (S100A16 Antibody) at dilution of 1:200 (under 40x lens).

Applications

Tested applications:	ELISA, WB, IHC, IF
Cited applications:	IHC, IP, WB
Species specificity:	Human; other species not tested.
Cited species:	Human, mouse, rat
Calculated S100A16 MW:	103aa, 12 kDa
Observed S100A16 MW:	9-12 kDa
Positive WB detected in	A431 cells, Transfected HEK-293 cells
Positive IHC detected in	Human lung cancer tissue, human colon cancer tissue
Positive IF detected in	MCF-7 cells
Recommended dilution:	WB: 1:200-1:1000 IHC: 1:50-1:500 IF: 1:50-1:500

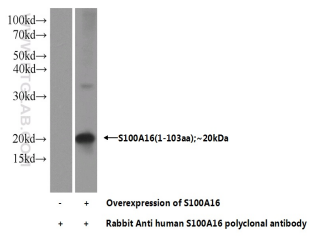
Application key: WB = Western blotting, IHC = Immunohistochemistry, IF = Immunofluorescence, IP = Immunoprecipitation

Immunogen information

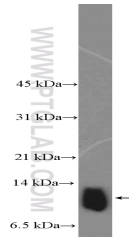
Immunogen:	Ag2023
GenBank accession number:	BC019099
Gene ID (NCBI):	140576
Full name:	S100 calcium binding protein A16

Product information

Purification method:	Antigen affinity purification
Storage:	PBS with 0.1% sodium azide and 50% glycerol pH 7.3. Store at -20°C.



Transfected HEK-293 cells were subjected to SDS PAGE followed by western blot with 11456-1-AP(S100A16 Antibody) at dilution of 1:1000



A431 cells were subjected to SDS PAGE followed by western blot with 11456-1-AP(S100A16 Antibody) at dilution of 1:300