

CSTF1 Polyclonal Antibody

Catalog number: 10064-2-AP

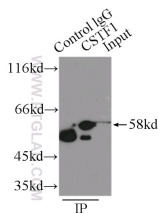
Size: 15 µg/150 µl

Source: Rabbit

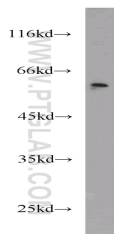
Isotype: IgG

Synonyms:

CSTF1; CF 1 50 kDa subunit,
Cleavage stimulation factor,
CstF 50, CSTF 50 kDa subunit,
CSTF1, CstFp50



IP Result of anti-CSTF1 (IP:10064-2-AP, 2ug; Detection:10064-2-AP 1:500) with NIH/3T3 cells lysate 2500ug.



HeLa cells were subjected to SDS PAGE followed by western blot with 10064-2-AP(CSTF1 antibody) at dilution of 1:1000

Background

Cleavage stimulation factor (CstF), a heterotrimeric protein with subunits of 77, 64, and 50 kD (CstF-77, -64, and -50), is a polyadenylation factor that helps to specify the site of processing. CstF recognizes the G+U-rich element, a sequence located downstream of the cleavage site. CstF-50 subunit interacts with the COOH-terminal domain of the RNAP II largest subunit (CTD). This subunit may be responsible for the interaction of CSTF with other factors to form a stable complex on the pre-mRNA, and multiple WD domains are required for protein interactions.

Applications

Tested applications:	ELISA, WB, IP
Cited applications:	WB
Species specificity:	Human, Mouse, Rat; other species not tested.
Cited species:	Human
Calculated CSTF1 MW:	48.3 kDa
Observed CSTF1 MW:	50-58 kDa
Positive WB detected in	HeLa cells, HEK-293 cells, HepG2 cells, K-562 cells, mouse brain tissue, mouse kidney tissue, NIH/3T3 cells
Positive IP detected in	NIH/3T3 cells
Recommended dilution:	WB: 1:500-1:5000 IP: 1:200-1:2000

Application key: WB = Western blotting, IHC = Immunohistochemistry, IF = Immunofluorescence, IP = Immunoprecipitation

Immunogen information

Immunogen:	Ag0109
GenBank accession number:	BC001011
Gene ID (NCBI):	1477
Full name:	Cleavage stimulation factor, 3' pre-RNA, subunit 1, 50kDa

Product information

Purification method:	Antigen affinity purification
Storage:	PBS with 0.1% sodium azide and 50% glycerol pH 7.3. Store at -20°C.