

HINFP Polyclonal Antibody

Catalog number: 10066-2-AP

Size: 20 µg/150 µl

Source: Rabbit

Isotype: IgG

Synonyms:

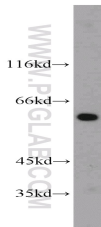
HINFP; DKFZp434F162, HiNF P,

HINFP, Histone nuclear factor

P, MIZF, ZNF743



Immunofluorescent analysis of HeLa cells, using HINFP antibody 10066-1-AP at 1:25 dilution and Rhodamine-labeled goat anti-rabbit IgG (red). Blue pseudocolor = DAPI (fluorescent DNA dye).



human liver tissue were subjected to SDS PAGE followed by western blot with 10066-2-AP(HINFP antibody) at dilution of 1:300

Background

Methylation of CpG dinucleotides is the major epigenetic modification in higher eukaryotic genomes. MIZF interacts with MBD2, a methyl-CpG-binding protein playing a critical role in DNA methylation-mediated transcriptional repression. MIZF functions as a negative regulator of transcription by binding to MBD2 and recruiting histone deacetylase (HDAC)-containing complexes. MIZF mRNA is present in various human tissues and cell lines and expressed as a 60kd protein.

Applications

Tested applications:	ELISA, WB, IF
Species specificity:	Human, Mouse, Rat; other species not tested.
Calculated HINFP MW:	60 kDa
Observed HINFP MW:	60 kDa
Positive WB detected in	Human liver tissue, L02 cells
Positive IF detected in	Hela cells, L02 cells
Recommended dilution:	WB: 1:200-1:1000 IF: 1:10-1:100

Application key: WB = Western blotting, IHC = Immunohistochemistry, IF = Immunofluorescence, IP = Immunoprecipitation

Immunogen information

Immunogen:	Ag0115
GenBank accession number:	BC001073
Gene ID (NCBI):	25988
Full name:	Histone H4 transcription factor

Product information

Purification method:	Antigen affinity purification
Storage:	PBS with 0.1% sodium azide and 50% glycerol pH 7.3. Store at -20°C.