

IGF2BP2 Polyclonal Antibody

Catalog number: 11601-1-AP

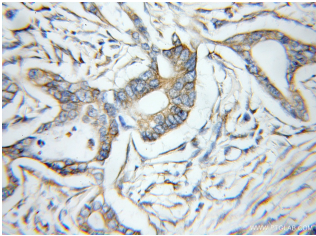
Size: 20 µg/150 µl

Source: Rabbit

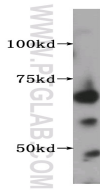
Isotype: IgG

Synonyms:

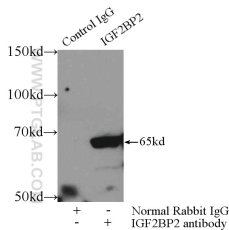
IGF2BP2; IGF II mRNA binding protein 2, IGF2 mRNA binding protein 2, IGF2BP2, IMP 2, IMP2, p62, VICKZ family member 2, VICKZ2



Immunohistochemical of paraffin-embedded human pancreas cancer using 11601-1-AP(IGF2BP2 antibody) at dilution of 1:50 (under 10x lens)



human kidney tissue were subjected to SDS PAGE followed by western blot with 11601-1-AP(IGF2BP2 antibody) at dilution of 1:1000



IP Result of anti-IGF2BP2 (IP:11601-1-AP, 3µg; Detection:11601-1-AP 1:500) with HEK-293 cells lysate 1000µg.

Background

Insulin-like growth factor 2 mRNA-binding protein 2(IGF2BP2), ia a member of a family of mRNA binding protein, which can bind to several mammalian cells' mRNAs. Thus it may involve in the regulation of translation of mRNA. IGF2BP2's polymorphisms is risk factor for developing type 2 diabetes. This antibody raise against part of N-terminus of human IGF2BP2.

Applications

Tested applications:	ELISA, WB, IHC, IP
Cited applications:	WB
Species specificity:	Human,Mouse,Rat; other species not tested.
Cited species:	Human
Calculated IGF2BP2 MW:	594aa,65 kDa
Observed IGF2BP2 MW:	65 kDa
Positive WB detected in	Human kidney tissue, COLO 320 cells, human heart tissue
Positive IP detected in	HEK-293 cells
Positive IHC detected in	Human pancreas cancer tissue
Recommended dilution:	WB: 1:500-1:5000 IP: 1:200-1:2000 IHC: 1:20-1:200

Application key: WB = Western blotting, IHC= Immunohistochemistry, IF = Immunofluorescence, IP = Immunoprecipitation

Immunogen information

Immunogen:	Ag2142
GenBank accession number:	BC021290
Gene ID (NCBI):	10644
Full name:	Insulin-like growth factor 2 mRNA binding protein 2

Product information

Purification method:	Antigen affinity purification
Storage:	PBS with 0.1% sodium azide and 50% glycerol pH 7.3. Store at -20°C.