

## CD31 Polyclonal Antibody

Catalog number: 11265-1-AP

Size: 59 µg/150 µl

Source: Rabbit

Isotype: IgG

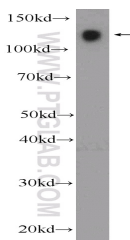
Synonyms:

PECAM1; CD31, EndoCAM,

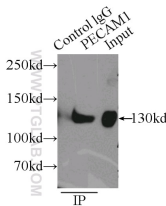
FLJ58394, GPIIA, PECA1,

PECAM 1, PECAM1, VEC

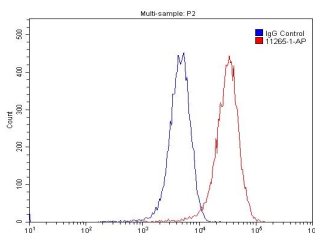
marker



Jurkat cells were subjected to SDS PAGE followed by western blot with 11265-1-AP (CD31 Antibody) at dilution of 1:1000



IP Result of anti-PECAM1,CD31 (IP:11265-1-AP, 5ug; Detection:11265-1-AP 1:300) with Jurkat cells lysate 4000ug.



1X10<sup>6</sup> HUVEC cells were stained with 0.2ug CD31 antibody (11265-1-AP, red) and control antibody (blue). Fixed with 4% PFA blocked with 3% BSA (30 min). Alexa Fluor 488-conjugated AffiniPure Goat Anti-Rabbit IgG(H+L) with dilution 1:1500.

### Background

Platelet endothelial cell adhesion molecule-1 (PECAM-1, CD31) is a member of the immunoglobulin gene superfamily of cell adhesion molecules. It is highly expressed on the surface of the endothelium, making up a large portion of its intracellular junctions. PECAM-1 is also present on the surface of hematopoietic cells and immune cells including platelets, monocytes, neutrophils, natural killer cells, megakaryocytes and some types of T-cell (PMID: 9011572). As well as its role in cell-cell adhesion, PECAM-1 functions as a signaling receptor, and is involved in important physiological events such as nitric oxide production, regulation of T-cell immunity and tolerance, leukocyte transendothelial migration and inflammation and angiogenesis (PMID: 21183735; 20978210; 17872453; 20634489).

### Applications

Tested applications:	ELISA, IP, IHC, WB, FC
Cited applications:	IF, IHC
Species specificity:	Human; other species not tested.
Cited species:	Human, monkey, mouse
Calculated CD31 MW:	83 kDa
Observed CD31 MW:	80-100 kDa,130 kDa
Positive WB detected in	Jurkat cells
Positive IP detected in	Jurkat cells
Positive IHC detected in	Human renal cell carcinoma tissue, human endometrial cancer tissue, human gliomas tissue, human hepatocirrhosis tissue, human hysteromyoma tissue, human liver tissue, human lung cancer tissue, human tonsil tissue, human tonsillitis tissue
Positive FC detected in	HUVEC cells
Recommended dilution:	WB: 1:500-1:5000 IP: 1:200-1:1000 IHC: 1:20-1:200 FC: N/A

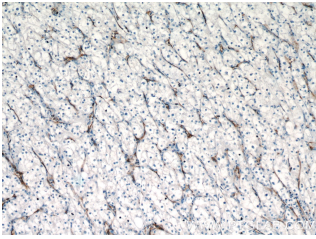
Application key: WB = Western blotting, IHC = Immunohistochemistry, IF = Immunofluorescence, IP = Immunoprecipitation

### Immunogen information

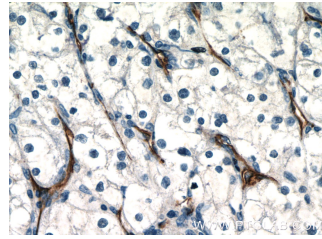
Immunogen:	Ag1787
GenBank accession number:	BC022512
Gene ID (NCBI):	5175
Full name:	Platelet/endothelial cell adhesion molecule

### Product information

Purification method:	Antigen affinity purification
Storage:	PBS with 0.1% sodium azide and 50% glycerol pH 7.3. Store at -20°C.



**Immunohistochemistry of paraffin-embedded human renal cell carcinoma tissue slide using 11265-1-AP( CD31 Antibody) at dilution of 1:400 (under 10x lens)**



**Immunohistochemistry of paraffin-embedded human renal cell carcinoma tissue slide using 11265-1-AP( CD31 Antibody) at dilution of 1:400 (under 40x lens)**