

CDR2 Polyclonal Antibody

Catalog number: 11611-2-AP

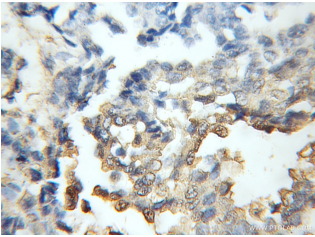
Size: 60 µg/150 µl

Source: Rabbit

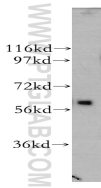
Isotype: IgG

Synonyms:

CDR2; CDR2, CDR62, PCD17, Yo



Immunohistochemical of paraffin-embedded human breast cancer using 11611-2-AP (CDR2 antibody) at dilution of 1:50 (under 10x lens)



human brain tissue were subjected to SDS PAGE followed by western blot with 11611-2-AP (CDR2 antibody) at dilution of 1:500

Background

Patients with paraneoplastic cerebellar degeneration (PCD) carry a characteristic antibody called anti-Yo. On Western blot analysis of Purkinje cells and tumor tissue from CD patient, the anti-Yo sera react with at least 2 antigens, a major species of 62 kD called CDR62 or CDR2 [PMID:18045792]. CDR2 is partly characterized, as CDR2 through its leucine zipper motif has been demonstrated to interact with c-myc, with cell cycle-related proteins and with a protein kinase, indicating that CDR2 is involved in signal transduction and gene transcription. Furthermore, CDR2 has been found to attenuate hypoxic response in renal cell carcinoma, and recent data suggest a role for CDR2 and c-myc in mitosis in cycling cells [PMID:21080165].

Applications

Tested applications:	ELISA, WB, IHC
Cited applications:	IP, WB
Species specificity:	Human, Mouse, Rat; other species not tested.
Cited species:	Human
Calculated CDR2 MW:	454aa, 52 kDa
Observed CDR2 MW:	62 kDa
Positive WB detected in:	Human brain tissue, Y79 cells
Positive IHC detected in:	Human breast cancer tissue
Recommended dilution:	WB: 1:500-1:5000 IHC: 1:20-1:200

Application key: WB = Western blotting, IHC = Immunohistochemistry, IF = Immunofluorescence, IP = Immunoprecipitation

Immunogen information

Immunogen:	Ag2183
GenBank accession number:	BC017503
Gene ID (NCBI):	1039
Full name:	Cerebellar degeneration-related protein 2, 62kDa

Product information

Purification method:	Antigen affinity purification
Storage:	PBS with 0.1% sodium azide and 50% glycerol pH 7.3. Store at -20°C.