

PSMD6 Polyclonal Antibody

Catalog number: 12539-1-AP

Size: 27 µg/150 µl

Source: Rabbit

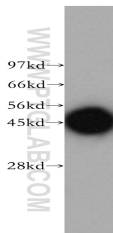
Isotype: IgG

Synonyms:

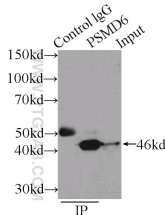
PSMD6; KIAA0107, p42A,

p44S10, PFAAP4, PSMD6,

Rpn7, S10, SGA 113M



Jurkat cells were subjected to SDS PAGE followed by western blot with 12539-1-AP (PSMD6 antibody) at dilution of 1:500



IP Result of anti-PSMD6 (IP:12539-1-AP, 3µg; Detection:12539-1-AP 1:500) with K-562 cells lysate 1500µg.

Background

The 26 S proteasome is a 2.5-MDa molecular machine that degrades ubiquitinated proteins in eukaryotic cells. It consists of a proteolytic core particle and two 19 S regulatory particles (RPs) composed of 6 ATPase (RPT) and 13 non-ATPase (RPN) subunits. PSMD6 gene encodes 26S proteasome regulatory subunit RPN7, the characteristic of this protein is not well known to date.

Applications

Tested applications:	ELISA, WB, IP
Species specificity:	Human, Mouse, Rat; other species not tested.
Calculated PSMD6 MW:	389aa, 46kd
Observed PSMD6 MW:	46kd
Positive WB detected in	Jurkat cells, human kidney tissue, human placenta tissue
Positive IP detected in	K-562 cells
Recommended dilution:	WB: 1:1000 - 1:4000 IP: 1:250 - 1:1000

Application key: WB = Western blotting, IHC = Immunohistochemistry, IF = Immunofluorescence, IP = Immunoprecipitation

Immunogen information

Immunogen:	Ag3251
GenBank accession number:	BC012369
Gene ID (NCBI):	9861
Full name:	Proteasome (prosome, macropain) 26S subunit, non-ATPase, 6

Product information

Purification method:	Antigen affinity purification
Storage:	PBS with 0.1% sodium azide and 50% glycerol pH 7.3. Store at -20°C.