

PARP3 Polyclonal Antibody

Catalog number: 11289-1-AP

Size: 33 µg/150 µl

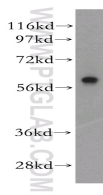
Source: Rabbit

Isotype: IgG

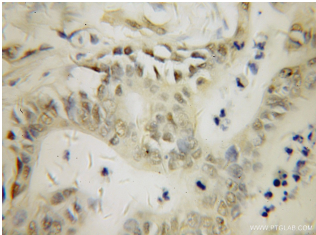
Synonyms:

PARP3; ADPRT3; ADPRTL2;

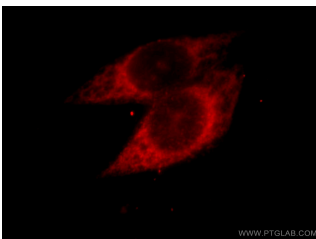
ADPRTL3; IRT1; PADPRT-3



human kidney tissue were subjected to SDS PAGE followed by western blot with 11289-1-AP(PARP3 Antibody) at dilution of 1:800



Immunohistochemistry of paraffin-embedded human pancreas cancer using 11289-1-AP (PARP3 Antibody) at Dilution 1:50 (under 40x lens)



Immunofluorescent analysis of HeLa cells, using PARP3 antibody 11289-1-AP at 1:25 dilution and Rhodamine-labeled goat anti-rabbit IgG (red).

Applications

Tested applications:	ELISA, WB, IHC, IF
Species specificity:	Human, mouse, rat; other species not tested.
Positive WB detected in:	Human kidney tissue, A549 cells, human heart tissue
Calculated PARP3 MW:	60kd
Observed PARP3 MW:	60kd
Positive IHC detected in:	Human pancreas cancer
Positive IF detected in:	HeLa cells
Recommended dilution:	WB: 1:200-1:2000
	IHC: 1:20-1:200
	IF: 1:20-1:50

Application key: WB = Western blotting, IHC = Immunohistochemistry, IF = Immunofluorescence, IP = Immunoprecipitation, FC = Flow cytometry

Immunogen information

Immunogen:	Ag1844
GenBank accession number:	BC014260
Gene ID (NCBI):	10039
Full name:	Poly (ADP-ribose) polymerase family, member 3

Product information

Purification method:	Antigen affinity purification
Storage:	PBS with 0.1% sodium azide and 50% glycerol pH 7.3. Store at -20°C.