

Myosin Light Chain 2 Polyclonal Antibody

Catalog number: 10906-1-AP

Size: 33 µg/150 µl

Source: Rabbit

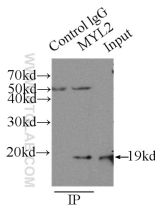
Isotype: IgG

Synonyms:

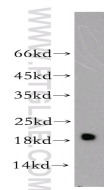
MYL2; CMH10, MLC 2, MLC 2v,

MLC2, MLC2V, MYL2, Myosin

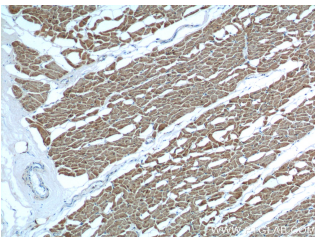
Light Chain 2



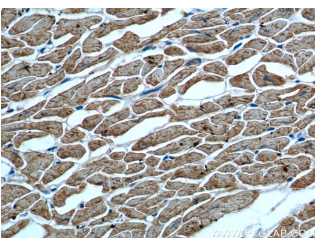
IP Result of anti-MYL2 (IP:10906-1-AP, 3µg; Detection:10906-1-AP 1:500) with mouse heart tissue lysate 6000µg.



mouse heart tissue were subjected to SDS PAGE followed by western blot with 10906-1-AP(MYL2 antibody) at dilution of 1:1000



Immunohistochemistry of paraffin-embedded human heart tissue slide using 10906-1-AP(MYL2 Antibody) at dilution of 1:200 (under 10x lens)



Immunohistochemistry of paraffin-embedded human

Background

MYL2, also named as MLC-2v and MLC-2, is ventricular/cardiac muscle isoform. Defects in MYL2 are the cause of cardiomyopathy familial hypertrophic type 10 (CMH10). Defects in MYL2 are the cause of cardiomyopathy familial hypertrophic with mid-left ventricular chamber type 2 (MVC2). MYL2 has been widely used as a marker of mature ventricular cardiomyocytes.

Applications

Tested applications:	ELISA, WB, IP, IHC
Cited applications:	FC, IF, WB
Species specificity:	Human, Mouse, Rat, Zebrafish; other species not tested.
Cited species:	Human, mouse, zebrafish
Calculated Myosin Light Chain 2 MW:	19 kDa
Observed Myosin Light Chain 2 MW:	19 kDa
Positive WB detected in	Mouse heart tissue, rat heart tissue
Positive IP detected in	Mouse heart tissue
Positive IHC detected in	Human heart tissue
Recommended dilution:	WB: 1:500-1:5000 IP: 1:200-1:2000 IHC: 1:20-1:200

Application key: WB = Western blotting, IHC = Immunohistochemistry, IF = Immunofluorescence, IP = Immunoprecipitation

Immunogen information

Immunogen:	Ag1356
GenBank accession number:	BC015821
Gene ID (NCBI):	4633
Full name:	Myosin, light chain 2, regulatory, cardiac, slow

Product information

Purification method:	Antigen affinity purification
Storage:	PBS with 0.1% sodium azide and 50% glycerol pH 7.3. Store at -20°C.

heart tissue slide using 10906-
1-AP(MYL2 Antibody) at
dilution of 1:200 (under 40x
lens)