

## RAB2B Polyclonal Antibody

Catalog number: 11756-1-AP

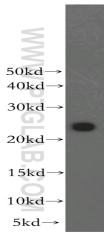
Size: 20 µg/150 µl

Source: Rabbit

Isotype: IgG

Synonyms:

RAB2B; RAB2B, FLJ14824, Ras  
related protein Rab 2B



human brain tissue were subjected to SDS PAGE followed by western blot with 11756-1-AP(RAB2B antibody) at dilution of 1:800

### Applications

Tested applications:	ELISA, WB
Species specificity:	Human, mouse, rat; other species not tested.
Calculated RAB2B MW:	216aa,24 kDa
Observed RAB2B MW:	24kd
Positive WB detected in	Human brain tissue, HeLa cells
Recommended dilution:	WB: 1:500-1:5000

Application key: WB = Western blotting, IHC = Immunohistochemistry, IF = Immunofluorescence, IP = Immunoprecipitation

### Immunogen information

Immunogen:	Ag2352
GenBank accession number:	BC020839
Gene ID (NCBI):	84932
Full name:	RAB2B, member RAS oncogene family

### Product information

Purification method:	Antigen affinity purification
Storage:	PBS with 0.1% sodium azide and 50% glycerol pH 7.3. Store at -20°C.