

# Osteopontin POLYCLONAL ANTIBODY

Catalog Number: 22952-1-AP

5 Publications

## Basic Information

Catalog Number:  
22952-1-AP

Size:  
54 µg/150 µl

Source:  
Rabbit

Isotype:  
IgG

Purification Method:  
Antigen affinity purification

Immunogen Catalog Number:  
AG19216

GenBank Accession Number:  
BC007016

GeneID (NCBI):  
6696

Full Name:  
secreted phosphoprotein 1

Calculated MW:  
314aa, 35 kDa

Observed MW:  
66 kDa

Recommended Dilutions:

WB 1:500-1:5000

IHC 1:50-1:200

IF 1:20-1:200

## Applications

Tested Applications:  
ELISA, IHC, WB, IF

Cited Applications:  
IF, IHC, WB

Species Specificity:  
Human, Mouse

Cited Species:  
human, mouse

Positive Controls:

WB : mouse kidney tissue; HEK-293 cells, HepG2 cells, Jurkat cells

IHC : human stomach cancer tissue; human colon cancer tissue

IF : HepG2 cells;

## Background Information

Osteopontin (OPN), also known as SPP1, is a secreted glycoposphoprotein that belongs to the small integrin-binding ligand N-linked glycoprotein (SIBLING) family. Originally isolated from bone, OPN has been found in kidney, vascular tissues, biological fluids, and various tumor tissues (PMID: 15138464; 16406521). OPN can interact with CD44 and integrins and regulate diverse biological processes. It has a multifaceted role in bone development and remodeling, and is also involved in the inflammatory and immune response, oncogenesis and cancer progression.

## Notable Publications

| Author        | Pubmed ID | Journal                             | Application |
|---------------|-----------|-------------------------------------|-------------|
| Gui-Zhen Wang | 26565418  | Elife                               | IHC, IF     |
| Jiawen Si     | 24850303  | Acta Biochim Biophys Sin (Shanghai) |             |
| Xia Ying      | 25109745  | Oncol Rep                           | WB          |

## Storage

Storage:

Store at -20°C. Stable for one year after shipment.

Storage Buffer:

PBS with 0.02% sodium azide and 50% glycerol pH 7.3.

Aliquoting is unnecessary for -20°C storage

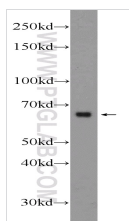
For technical support and original validation data for this product please contact:

T: 1 (888) 4PTGLAB (1-888-478-4522) (toll free in USA), or 1(312) 455-8498 (outside USA)

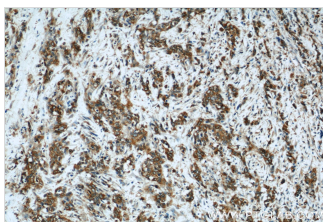
E: [proteintech@ptglab.com](mailto:proteintech@ptglab.com)  
W: [ptglab.com](http://ptglab.com)

This product is exclusively available under Proteintech Group brand and is not available to purchase from any other manufacturer.

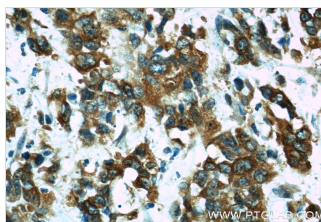
## Selected Validation Data



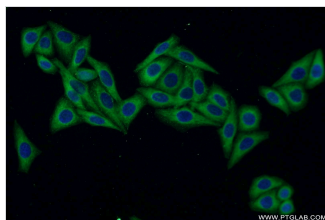
mouse kidney tissue were subjected to SDS PAGE followed by western blot with 22952-1-AP(OPN, SPP1 Antibody) at dilution of 1:1000



Immunohistochemical of paraffin-embedded human stomach cancer using 22952-1-AP(OPN, SPP1 antibody) at dilution of 1:50 (under 10x lens)



Immunohistochemical of paraffin-embedded human stomach cancer using 22952-1-AP(OPN, SPP1 antibody) at dilution of 1:50 (under 40x lens)



Immunofluorescent analysis of HepG2 cells using 22952-1-AP(OPN, SPP1 Antibody) at dilution of 1:50 and Alexa Fluor 488-conjugated AffiniPure Goat Anti-Rabbit IgG(H+L)