

## PRG2 Polyclonal Antibody

Catalog number: 10766-1-AP

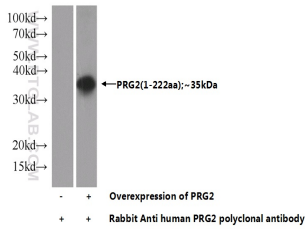
Size: 20 µg/150 µl

Source: Rabbit

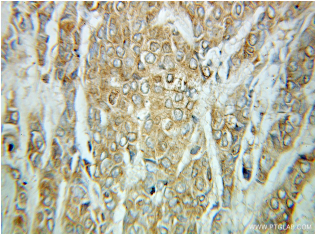
Isotype: IgG

Synonyms:

PRG2; BMPG, Bone marrow proteoglycan, EMBP, MBP, MBP1, PRG2, Proteoglycan 2



Transfected HEK-293 cells were subjected to SDS PAGE followed by western blot with 10766-1-AP (PRG2 Antibody) at dilution of 1:1000



Immunohistochemical of paraffin-embedded human breast cancer using 10766-1-AP (PRG2 antibody) at dilution of 1:100 (under 10x lens)

### Applications

Tested applications:	ELISA, IHC, WB
Cited applications:	IHC
Species specificity:	Human; other species not tested.
Cited species:	Human
Calculated PRG2 MW:	25 kDa
Observed PRG2 MW:	
Positive WB detected in	Transfected HEK-293 cells
Positive IHC detected in	Human breast cancer tissue
Recommended dilution:	WB: 1:500-1:5000 IHC: 1:20-1:200

Application key: WB = Western blotting, IHC = Immunohistochemistry, IF = Immunofluorescence, IP = Immunoprecipitation

### Immunogen information

Immunogen:	Ag1150
GenBank accession number:	BC005929
Gene ID (NCBI):	5553
Full name:	Proteoglycan 2, bone marrow (natural killer cell activator, eosinophil granule major basic protein)

### Product information

Purification method:	Antigen affinity purification
Storage:	PBS with 0.1% sodium azide and 50% glycerol pH 7.3. Store at -20°C.