

## NSD3 Polyclonal Antibody

Catalog number: 11345-1-AP

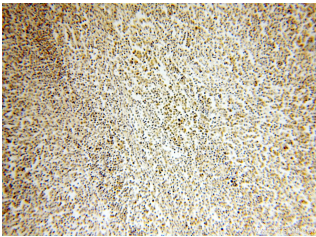
Size: 48 µg/150 µl

Source: Rabbit

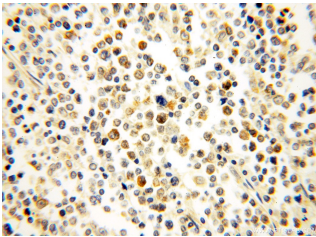
Isotype: IgG

Synonyms:

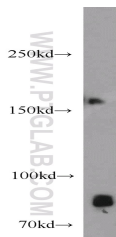
WHSC1L1; NSD3, Protein whistle, WHSC1 like protein 1, WHSC1L1



Immunohistochemical of paraffin-embedded human lymphoma using 11345-1-AP (WHSC1L1 antibody) at dilution of 1:50 (under 10x lens)



Immunohistochemical of paraffin-embedded human lymphoma using 11345-1-AP (WHSC1L1 antibody) at dilution of 1:50 (under 40x lens)



HeLa cells were subjected to SDS PAGE followed by western blot with 11345-1-AP (WHSC1L1 antibody) at dilution of 1:500

### Background

WHSC1L1, also named as NSD3 and DC28, belongs to the histone-lysine methyltransferase family and SET2 subfamily. It is histone methyltransferase. WHSC1L1 is a potentially transforming oncogene based on the number of altered phenotypes expressed by the cells. It contains a PWWP-domain that is a methyl-lysine recognition motif involved in histone code modification and epigenetic regulation of gene expression. Knockdown of WHSC1L1 in 8p11-12-amplified breast cancer cells resulted in profound loss of growth and survival of these cells. (PMID:20940404). This antibody recognizes the long isoform (160-170 kDa) and short isoform (68-72 kDa).

### Applications

Tested applications:	ELISA, WB, IHC
Cited applications:	IHC, WB
Species specificity:	Human, Mouse, Rat; other species not tested.
Cited species:	Human
Calculated NSD3 MW:	1437aa, 162 kDa
Observed NSD3 MW:	160-170kd, 68-72kd
Positive WB detected in:	HeLa cells, HEK-293 cells
Positive IHC detected in:	Human lymphoma tissue
Recommended dilution:	WB: 1:200-1:2000 IHC: 1:20-1:200

Application key: WB = Western blotting, IHC = Immunohistochemistry, IF = Immunofluorescence, IP = Immunoprecipitation

### Immunogen information

Immunogen:	Ag1894
GenBank accession number:	BC012059
Gene ID (NCBI):	54904
Full name:	Wolf-Hirschhorn syndrome candidate 1-like 1

### Product information

Purification method:	Antigen affinity purification
Storage:	PBS with 0.1% sodium azide and 50% glycerol pH 7.3. Store at -20°C.