

## Tim23 Polyclonal Antibody

Catalog number: 11123-1-AP

Size: 45 µg/150 µl

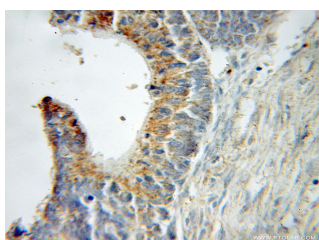
Source: Rabbit

Isotype: IgG

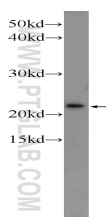
Synonyms:

TIMM23; PRO1197, TIM23,

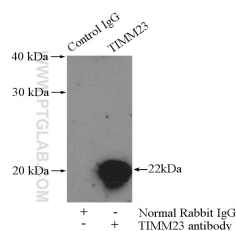
TIMM23



Immunohistochemical of paraffin-embedded human ovary tumor using 11123-1-AP (TIMM23 antibody) at dilution of 1:50 (under 10x lens)



Jurkat cells were subjected to SDS PAGE followed by western blot with 11123-1-AP (TIMM23 antibody) at dilution of 1:600



IP Result of anti-Tim23 (IP:11123-1-AP, 4µg; Detection:11123-1-AP 1:1000) with mouse heart tissue lysate 3200µg.

### Background

Tim23 is a mitochondrial inner membrane protein essential for import of preproteins into the matrix. Tim23 together with Tim17 and Tim44 form the Tim23 complex which mediates the import of nuclear encoded preproteins into the mitochondria. Tim23 is commonly used as loading control for mitochondrial inner membrane protein.

### Applications

Tested applications:	ELISA, IHC, WB, IP
Cited applications:	WB
Species specificity:	Human, Mouse, Rat; other species not tested.
Cited species:	Human, mouse
Calculated Tim23 MW:	22 kDa
Observed Tim23 MW:	22 kDa
Positive WB detected in	Jurkat cells, COLO 320 cells, mouse heart tissue, mouse skeletal muscle tissue, rat heart tissue
Positive IP detected in	Mouse heart tissue
Positive IHC detected in	Human ovary tumor tissue, human heart tissue, human testis tissue
Recommended dilution:	WB: 1:200-1:2000
	IP: 1:500-1:5000
	IHC: 1:20-1:200

Application key: WB = Western blotting, IHC = Immunohistochemistry, IF = Immunofluorescence, IP = Immunoprecipitation

### Immunogen information

Immunogen:	Ag1620
GenBank accession number:	BC062707
Gene ID (NCBI):	10431
Full name:	Translocase of inner mitochondrial membrane 23 homolog (yeast)

### Product information

Purification method:	Antigen affinity purification
Storage:	PBS with 0.1% sodium azide and 50% glycerol pH 7.3. Store at -20°C.