

GPR137 Polyclonal Antibody

Catalog number: 11929-1-AP

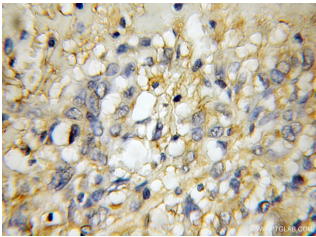
Size: 20 µg/150 µl

Source: Rabbit

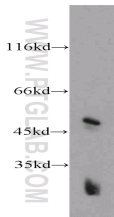
Isotype: IgG

Synonyms:

GPR137; C11orf4, G protein coupled receptor 137, GPR137, GPR137A, TM7SF1L1



Immunohistochemical of paraffin-embedded human gliomas using 11929-1-AP(GPR137 antibody) at dilution of 1:50 (under 10x lens)



mouse brain tissue were subjected to SDS PAGE followed by western blot with 11929-1-AP(GPR137 antibody) at dilution of 1:300

Background

G protein-coupled receptors (GPRs) are highly related to oncogenesis and cancer metastasis. G protein-coupled receptor 137 (GPR137) was initially reported as a novel orphan GPR about 10 years ago. GPR137 is ubiquitously expressed in the central nervous system (CNS), mainly in the hippocampus (PMID: 22025619). GPR137 is involved in the progression of human glioma, suggesting GPR137 as a potential oncogene of glioma cells (PMID: 24870220). Recent study shows that GPR137 plays an important role in colon cancer cell proliferation (PMID: 25301753).

Applications

Tested applications:	ELISA, WB, IHC
Cited applications:	IHC
Species specificity:	Human,Mouse,Rat; other species not tested.
Cited species:	Human
Calculated GPR137 MW:	396aa,44 kDa
Observed GPR137 MW:	50kd
Positive WB detected in	Mouse brain tissue
Positive IHC detected in	Human gliomas tissue
Recommended dilution:	WB: 1:200-1:2000 IHC: 1:20-1:200

Application key: WB = Western blotting, IHC = Immunohistochemistry, IF = Immunofluorescence, IP = Immunoprecipitation

Immunogen information

Immunogen:	Ag2611
GenBank accession number:	BC033920
Gene ID (NCBI):	56834
Full name:	G protein-coupled receptor 137

Product information

Purification method:	Antigen affinity purification
Storage:	PBS with 0.02% sodium azide and 50% glycerol pH 7.3. Store at -20°C.