

## Caspase 2/p18 Polyclonal Antibody

Catalog number: 10436-1-AP

Size: 20 µg/150 µl

Source: Rabbit

Isotype: IgG

Synonyms:

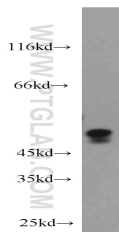
CASP2; CASP 2, CASP2,

Caspase 2, Caspase 2/p18,

Caspase2, ICH 1L, ICH 1L/1S,

ICH1, NEDD 2, NEDD2,

Protease ICH 1



mouse kidney tissue were subjected to SDS PAGE followed by western blot with 10436-1-AP(CASP2 antibody) at dilution of 1:500

### Background

CASP2(Caspase-2) is also named as ICH1, NEDD2 and belongs to the peptidase C14A family. It is involved in the activation cascade of caspases responsible for apoptosis execution and might function by either activating some proteins required for cell death or inactivating proteins necessary for cell survival. It has 2 isoforms produced by alternative splicing and can exist almost as a dimer in solution (PMID:15865942).

### Applications

Tested applications:	ELISA, WB
Species specificity:	Human, Mouse, Rat; other species not tested.
Calculated Caspase 2/p18 MW:	452aa, 51 kDa
Observed Caspase 2/p18 MW:	51 kDa
Positive WB detected in	Mouse kidney tissue, HEK-293 cells, HeLa cells, HL-60 cells, Jurkat cells, mouse liver tissue
Recommended dilution:	WB: 1:200-1:2000

Application key: WB = Western blotting, IHC = Immunohistochemistry, IF = Immunofluorescence, IP = Immunoprecipitation

### Immunogen information

Immunogen:	Ag0694
GenBank accession number:	BC002427
Gene ID (NCBI):	835
Full name:	Caspase 2, apoptosis-related cysteine peptidase

### Product information

Purification method:	Antigen affinity purification
Storage:	PBS with 0.1% sodium azide and 50% glycerol pH 7.3. Store at -20°C.