

## CPEB1 Polyclonal Antibody

Catalog number: 13274-1-AP

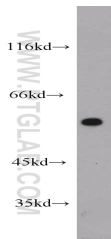
Size: 35 µg/150 µl

Source: Rabbit

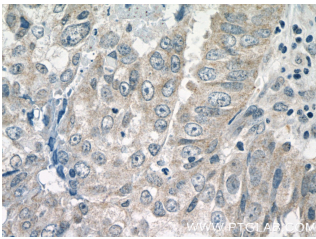
Isotype: IgG

Synonyms:

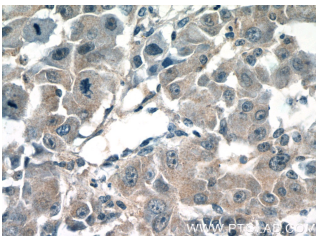
CPEB1; CEBP, CPE binding protein 1, CPE BP1, CPEB, CPEB1, FLJ13203, h CEBP, hCPEB 1



A375 cells were subjected to SDS PAGE followed by western blot with 13274-1-AP(CPEB1 antibody) at dilution of 1:1000



Immunohistochemistry of paraffin-embedded human breast cancer tissue slide using 13274-1-AP( CPEB1 Antibody) at dilution of 1:50 (under 40x lens)



Immunohistochemistry of paraffin-embedded human liver cancer tissue slide using 13274-1-AP( CPEB1 Antibody) at dilution of 1:50 (under 40x lens)

### Background

CPEB1, also named as CEBP, CPEB and CPE-BP1, contains two RRM (RNA recognition motif) domains and belongs to the RRM CPEB family. It is a sequence-specific RNA-binding protein that regulates mRNA cytoplasmic polyadenylation and translation initiation during oocyte maturation, early development and at postsynapse sites of neurons. CPEB1 regulated translation is a key process involved in insulin signaling. This is a rabbit polyclonal antibody raised against residues near the C terminus of human CPEB1. This antibody may recognize several bands, but only ~56kDa band is the right one, other(40~50kDa) is un-specific bands.

### Applications

Tested applications:	ELISA, WB, IHC
Cited applications:	IF, IP, WB
Species specificity:	Human, Mouse, Rat; other species not tested.
Cited species:	Human
Calculated CPEB1 MW:	486aa, 54 kDa
Observed CPEB1 MW:	54kd
Positive WB detected in	A375 cells, human heart tissue
Positive IHC detected in	Human liver cancer tissue, human breast cancer tissue, human colon cancer tissue
Recommended dilution:	WB: 1:500-1:5000 IHC: 1:20-1:200

Application key: WB = Western blotting, IHC = Immunohistochemistry, IF = Immunofluorescence, IP = Immunoprecipitation

### Immunogen information

Immunogen:	Ag3994
GenBank accession number:	BC035348
Gene ID (NCBI):	64506
Full name:	Cytoplasmic polyadenylation element binding protein 1

### Product information

Purification method:	Antigen affinity purification
Storage:	PBS with 0.02% sodium azide and 50% glycerol pH 7.3. Store at -20°C.