

NIF3L1 Polyclonal Antibody

Catalog number: 10549-1-AP

Size: 20 µg/150 µl

Source: Rabbit

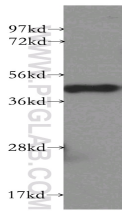
Isotype: IgG

Synonyms:

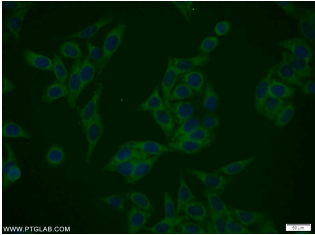
NIF3L1; ALS2CR1, CALS 7,

MDS015, My018, NIF3 like

protein 1, NIF3L1



HEK-293 cells were subjected to SDS PAGE followed by western blot with 10549-1-AP(NIF3L1 antibody) at dilution of 1:500



Immunofluorescent analysis of HepG2 cells using 10549-1-AP(NIF3L1 Antibody) at dilution of 1:25 and Alexa Fluor 488-conjugated AffiniPure Goat Anti-Rabbit IgG(H+L)

Applications

Tested applications:	ELISA, WB, IF
Species specificity:	Human; other species not tested.
Calculated NIF3L1 MW:	42 kDa
Observed NIF3L1 MW:	45 kDa
Positive WB detected in:	HEK-293 cells, HepG2 cells
Positive IF detected in:	HepG2 cells
Recommended dilution:	WB: 1:200-1:2000 IF: 1:10-1:100

Application key: WB = Western blotting, IHC = Immunohistochemistry, IF = Immunofluorescence, IP = Immunoprecipitation

Immunogen information

Immunogen:	Ag0819
GenBank accession number:	BC007654
Gene ID (NCBI):	60491
Full name:	NIF3 NGG1 interacting factor 3-like 1 (<i>S. pombe</i>)

Product information

Purification method:	Antigen affinity purification
Storage:	PBS with 0.1% sodium azide and 50% glycerol pH 7.3. Store at -20°C.