

Cytokeratin 8 Polyclonal Antibody

Catalog number: 10384-1-AP

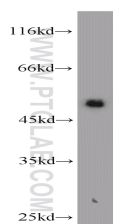
Size: 30 µg/150 µl

Source: Rabbit

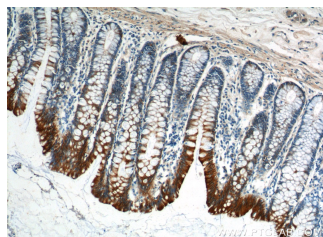
Isotype: IgG

Synonyms:

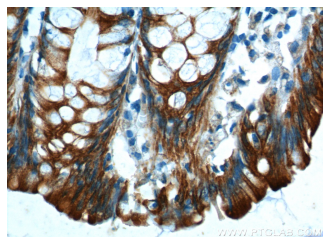
KRT8; CARD2, CK 8, CK8, CYK8,
Cytokeratin 8, K2C8, K8, keratin
8, KO, KRT8, Type II keratin Kb8



MCF7 cells were subjected to SDS PAGE followed by western blot with 10384-1-AP(KRT8 antibody) at dilution of 1:1500



Immunohistochemistry of paraffin-embedded human colon tissue slide using 10384-1-AP(KRT8 Antibody) at dilution of 1:200 (under 10x lens).



Immunohistochemistry of paraffin-embedded human colon tissue slide using 10384-1-AP(KRT8 Antibody) at dilution of 1:200 (under 40x lens).

Background

Keratins are a large family of proteins that form the intermediate filament cytoskeleton of epithelial cells, which are classified into two major sequence types. Type I keratins are a group of acidic intermediate filament proteins, including K9–K23, and the hair keratins Ha1–Ha8. Type II keratins are the basic or neutral counterparts to the acidic type I keratins, including K1–K8, and the hair keratins, Hb1–Hb6. KRT8 is often paired with keratin 18 in vivo.

Applications

Tested applications:	ELISA, WB, FC, IF, IHC
Species specificity:	Human, Mouse, Rat; other species not tested.
Calculated Cytokeratin 8	54 kDa
MW:	
Observed Cytokeratin 8	52 kDa
MW:	
Positive WB detected in	MCF7 cells, A431 cells, A549 cells, COLO 320 cells, HeLa cells, rat skin tissue
Positive IHC detected in	Human colon tissue, human breast cancer tissue, human placenta tissue, human prostate cancer tissue
Positive IF detected in	MCF-7 cells, A431 cells, HepG2 cells
Positive FC detected in	HepG2 cells, MCF-7 cells
Recommended dilution:	WB: 1:500-1:5000 IHC: 1:20-1:200 IF: 1:10-1:100 FC: N/A

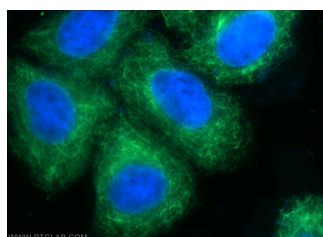
Application key: WB = Western blotting, IHC = Immunohistochemistry, IF = Immunofluorescence, IP = Immunoprecipitation

Immunogen information

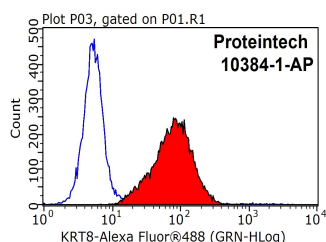
Immunogen:	Ag0488
GenBank accession number:	BC000654
Gene ID (NCBI):	3856
Full name:	Keratin 8

Product information

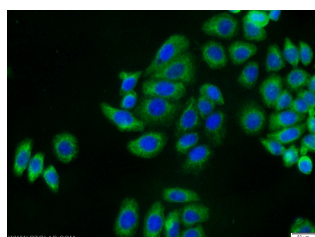
Purification method:	Antigen affinity purification
Storage:	PBS with 0.02% sodium azide and 50% glycerol pH 7.3. Store at -20°C.



Immunofluorescent analysis of MCF-7 cells using 10384-1-



1X10⁶ HepG2 cells were stained with 0.2µg KRT8



Immunofluorescent analysis of MCF-7 cells using 10384-1-

AP(KRT8 Antibody) at
dilution of 1:25 and Alexa
Fluor 488-conjugated
AffiniPure Goat Anti-Rabbit
IgG(H+L)

antibody (10384-1-AP, red)
and control antibody (blue).
Fixed with 90% MeOH
blocked with 3% BSA (30
min). Alexa Fluor 488-
conjugated AffiniPure Goat
Anti-Rabbit IgG(H+L) with
dilution 1:1000.

AP(KRT8 Antibody) at
dilution of 1:25 and Alexa
Fluor 488-conjugated
AffiniPure Goat Anti-Rabbit
IgG(H+L)