

CENPJ Polyclonal Antibody

Catalog number: 11517-1-AP

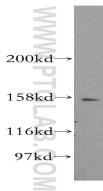
Size: 67 µg/150 µl

Source: Rabbit

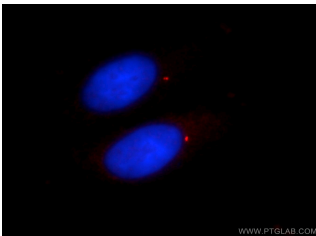
Isotype: IgG

Synonyms:

CENPJ; BM032, CENP J, CENPJ, centromere protein J, CPAP, LAG 3 associated protein, LAP, LIP1, LYST interacting protein 1, MCPH6



mouse testis tissue were subjected to SDS PAGE followed by western blot with 11517-1-AP(CENPJ antibody) at dilution of 1:500



Immunofluorescent analysis of HepG2 cells using 11517-1-AP(CENPJ Antibody) at dilution of 1:25 and Rhodamine-Goat anti-Rabbit IgG

Background

CENPJ, also named as CPAP, LAP and LIP1, belongs to the TCP10 family. It plays an important role in cell division and centrosome function by participating in centriole duplication. CENPJ inhibits microtubule nucleation from the centrosome.

Applications

Tested applications:	ELISA, WB, IF
Cited applications:	IF, WB
Species specificity:	Human,Mouse,Rat; other species not tested.
Cited species:	Human, mouse, rat
Calculated CENPJ MW:	1338aa,153 kDa
Observed CENPJ MW:	153kd
Positive WB detected in	Mouse testis tissue
Positive IF detected in	HepG2 cells
Recommended dilution:	WB: 1:200-1:2000 IF: 1:10-1:100

Application key: WB = Western blotting, IHC = Immunohistochemistry, IF = Immunofluorescence, IP = Immunoprecipitation

Immunogen information

Immunogen:	Ag2078
GenBank accession number:	BC024209
Gene ID (NCBI):	55835
Full name:	Centromere protein J

Product information

Purification method:	Antigen affinity purification
Storage:	PBS with 0.1% sodium azide and 50% glycerol pH 7.3. Store at -20°C.