

FKBPL Polyclonal Antibody

Catalog number: 10060-1-AP

Size: 39 µg/150 µl

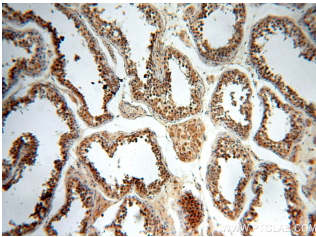
Source: Rabbit

Isotype: IgG

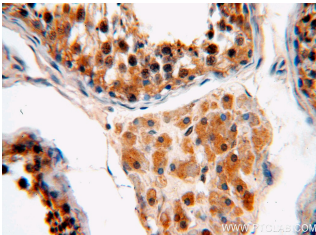
Synonyms:

FKBPL; DIR1, FK506 binding protein like, FKBPL, NG7,

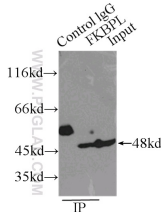
WISP39



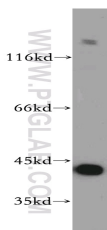
Immunohistochemical of paraffin-embedded human testis using 10060-1-AP (FKBPL antibody) at dilution of 1:50 (under 10x lens)



Immunohistochemical of paraffin-embedded human testis using 10060-1-AP (FKBPL antibody) at dilution of 1:50 (under 40x lens)



IP Result of anti-FKBPL (IP:10060-1-AP, 3ug; Detection:10060-1-AP 1:800) with MCF-7 cells lysate 2500ug.



MCF7 cells were subjected to SDS PAGE followed by western blot with 10060-1-

Background

FKBPL, also named as DIR1, NG7 and WISP39, has similarity to the immunophilin protein family, which plays a role in immunoregulation and basic cellular processes involving protein folding and trafficking. FKBPL levels may be a prognostic indicator and determinant of response to endocrine therapy (PMID:20103631, 15664193). It can be detected the band between 38 Kda and 48 Kda by western blot.

Applications

Tested applications:	ELISA, WB, IHC, IP
Cited applications:	IF, IHC, WB
Species specificity:	Human, Mouse, Rat; other species not tested.
Cited species:	Human, mouse
Calculated FKBPL MW:	349aa, 38 kDa
Observed FKBPL MW:	42-48 kDa; 38-40 kDa
Positive WB detected in	MCF7 cells, COLO 320 cells, HEK-293 cells, HeLa cells, human brain tissue, human testis tissue, Jurkat cells, MDA-MB-453s cells
Positive IP detected in	MCF-7 cells
Positive IHC detected in	Human testis tissue, human breast cancer tissue
Recommended dilution:	WB: 1:200-1:2000 IP: 1:200-1:2000 IHC: 1:20-1:200

Application key: WB = Western blotting, IHC = Immunohistochemistry, IF = Immunofluorescence, IP = Immunoprecipitation

Immunogen information

Immunogen:	Ag0112
GenBank accession number:	BC004168
Gene ID (NCBI):	63943
Full name:	FK506 binding protein like

Product information

Purification method:	Antigen affinity purification
Storage:	PBS with 0.1% sodium azide and 50% glycerol pH 7.3. Store at -20°C.

**AP(FKBPL antibody) at
dilution of 1:500**