

## MAD2L1 Polyclonal Antibody

Catalog number: 10337-1-AP

Size: 31 µg/150 µl

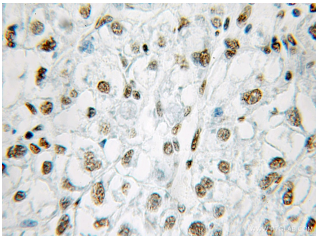
Source: Rabbit

Isotype: IgG

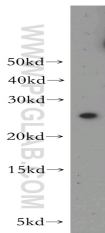
Synonyms:

MAD2L1; HSMAD2, MAD2,

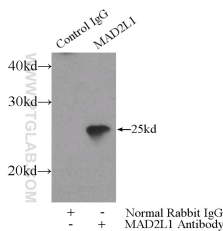
MAD2 like protein 1, MAD2L1



Immunohistochemical of paraffin-embedded human liver cancer using 10337-1-AP (MAD2L1 antibody) at dilution of 1:50 (under 25x lens)



HEK-293 cells were subjected to SDS PAGE followed by western blot with 10337-1-AP (MAD2L1 antibody) at dilution of 1:800



IP Result of anti-MAD2L1 (IP:10337-1-AP, 3µg; Detection:10337-1-AP 1:500) with HEK-293 cells lysate 1800µg.

### Background

MAD2 mitotic arrest deficient-like 1 (yeast) (MAD2L1, synonyms: MAD2, HSMAD2) is a component of the mitotic spindle assembly checkpoint that prevents the onset of anaphase until all chromosomes are properly aligned at the metaphase plate. MAD2L1 is localized to human chromosome band 5q23.3 by in situ hybridization.

### Applications

|                          |                                                     |
|--------------------------|-----------------------------------------------------|
| Tested applications:     | ELISA, WB, IHC, IP                                  |
| Cited applications:      | IHC, WB                                             |
| Species specificity:     | Human, Mouse, Rat; other species not tested.        |
| Cited species:           | Human, mouse                                        |
| Calculated MAD2L1 MW:    | 24 kDa                                              |
| Observed MAD2L1 MW:      | 25-30kd                                             |
| Positive WB detected in  | HEK-293 cells, HeLa cells, rat liver tissue         |
| Positive IP detected in  | HEK-293 cells                                       |
| Positive IHC detected in | Human liver cancer tissue, human ovary tumor tissue |
| Recommended dilution:    | WB: 1:200-1:2000                                    |
|                          | IP: 1:200-1:2000                                    |
|                          | IHC: 1:20-1:200                                     |

Application key: WB = Western blotting, IHC = Immunohistochemistry, IF = Immunofluorescence, IP = Immunoprecipitation

### Immunogen information

|                           |                                              |
|---------------------------|----------------------------------------------|
| Immunogen:                | Ag0307                                       |
| GenBank accession number: | BC000356                                     |
| Gene ID (NCBI):           | 4085                                         |
| Full name:                | MAD2 mitotic arrest deficient-like 1 (yeast) |

### Product information

|                      |                                                                     |
|----------------------|---------------------------------------------------------------------|
| Purification method: | Antigen affinity purification                                       |
| Storage:             | PBS with 0.1% sodium azide and 50% glycerol pH 7.3. Store at -20°C. |