

THADA Polyclonal Antibody

Catalog number: 12909-1-AP

Size: 20 µg/150 µl

Source: Rabbit

Isotype: IgG

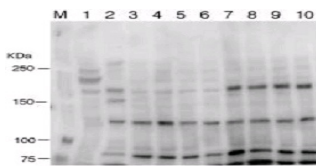
Synonyms:

THADA; FLJ21877, FLJ44016,

FLJ44876, FLJ77530, GITA,

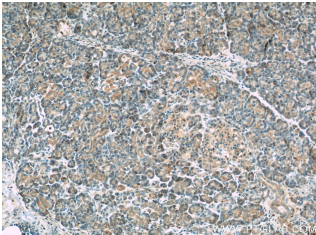
KIAA1767, THADA, thyroid

adenoma associated

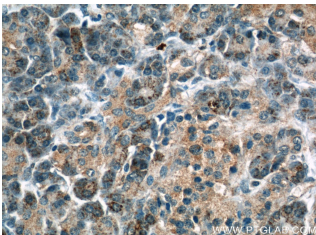


Anti-THADA (12909-1-AP) Western blot analysis: 50µg of lysate of mouse lung (lane 1), EA.hy926 cell (lane 2), CHO cell (lane 3-5), CHO cell transduced human THADA (lane 7-10). M is protein marker.

WB result of 12909-1-AP from Takashi Kobayashi.



Immunohistochemical of paraffin-embedded human pancreas using 12909-1-AP (THADA antibody) at dilution of 1:50 (under 10x lens)



Immunohistochemical of paraffin-embedded human pancreas using 12909-1-AP (THADA antibody) at dilution of 1:50 (under 40x lens)

Applications

Tested applications:	ELISA, WB, IHC
Species specificity:	Human, Mouse, Rat; other species not tested.
Calculated THADA MW:	220kd
Observed THADA MW:	183kd
Positive WB detected in	A549 cells, CHO cells, HeLa cells
Positive IHC detected in	Human pancreas tissue, human testis tissue, mouse ovary tissue, rat ovary tissue
Recommended dilution:	WB: 1:200-1:2000 IHC: 1:20-1:200

Application key: WB = Western blotting, IHC = Immunohistochemistry, IF = Immunofluorescence, IP = Immunoprecipitation

Immunogen information

Immunogen:	Ag3881
GenBank accession number:	BC025773
Gene ID (NCBI):	63892
Full name:	Thyroid adenoma associated

Product information

Purification method:	Antigen affinity purification
Storage:	PBS with 0.02% sodium azide and 50% glycerol pH 7.3. Store at -20°C.