

## CNTN1 Polyclonal Antibody

Catalog number: 13843-1-AP

Size: 20 µg/150 µl

Source: Rabbit

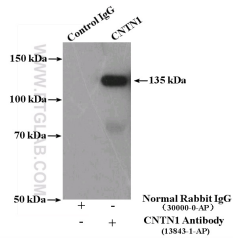
Isotype: IgG

Synonyms:

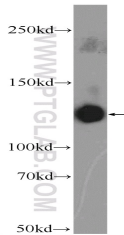
CNTN1; CNTN1, contactin 1, F3,

Glycoprotein gp135, GP135,

Neural cell surface protein F3



IP Result of anti-CNTN1 (IP:13843-1-AP, 4µg; Detection:13843-1-AP 1:1500) with rat brain tissue lysate 4000µg.



rat brain tissue were subjected to SDS PAGE followed by western blot with 13843-1-AP( CNTN1 Antibody) at dilution of 1:1200

### Background

Contactin-1 (CNTN1), also known as Glycoprotein gp135 or Neural cell surface protein F3, is a neuronal cell adhesion molecule of the immunoglobulin superfamily (PMID: 3049624). It consists of six Ig domains, four fibronectin-like motifs, and a glycosylphosphatidylinositol (GPI)-moiety. Expressed by the central and peripheral neurons, CNTN1 contributes to the formation and function of neuronal connections. It plays a role in axon extension and formation of septate-like junctions between axons and myelinating glial cells (PMID: 23724143). In addition, acting as a ligand for Notch, CNTN1 initiates a NOTCH/DTX1 signaling pathway that promotes oligodendrocyte maturation and myelination (PMID: 14567914).

### Applications

Tested applications:	ELISA, WB, IP
Cited applications:	WB
Species specificity:	Human, Mouse, Rat; other species not tested.
Cited species:	Rat
Calculated CNTN1 MW:	1018aa, 113 kDa
Observed CNTN1 MW:	135 kDa
Positive WB detected in	Rat brain tissue
Positive IP detected in	Rat brain tissue
Recommended dilution:	WB: 1:500-1:5000 IP: 1:500-1:5000

Application key: WB = Western blotting, IHC = Immunohistochemistry, IF = Immunofluorescence, IP = Immunoprecipitation

### Immunogen information

Immunogen:	Ag4803
GenBank accession number:	BC036569
Gene ID (NCBI):	1272
Full name:	Contactin 1

### Product information

Purification method:	Antigen affinity purification
Storage:	PBS with 0.1% sodium azide and 50% glycerol pH 7.3. Store at -20°C.