

AEG-1/MTDH-Specific Polyclonal Antibody

Catalog number: 13860-1-AP

Size: 53 µg/150 µl

Source: Rabbit

Isotype: IgG

Synonyms:

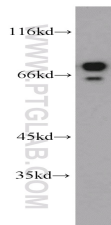
MTDH; 3D3, 3D3/LYRIC, AEG 1,

AEG1, LYRIC, LYRIC/3D3,

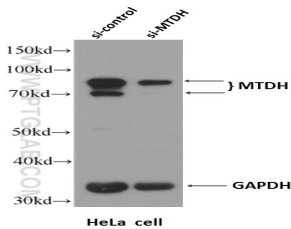
metadherin, Metastasis

adhesion protein, MTDH,

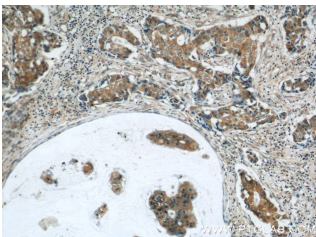
Protein LYRIC



MCF7 cells were subjected to SDS PAGE followed by western blot with 13860-1-AP(AEG-1 antibody) at dilution of 1:1000



WB result of AEG-1/MTDH antibody (13860-1-AP, 1:2000) with si-Control and si-MTDH transfected A549 cells.



Immunohistochemical of paraffin-embedded human breast cancer using 13860-1-AP(AEG-1 antibody) at dilution of 1:50 (under 10x lens)

Background

MTDH, also known as AEG-1, is a single-pass transmembrane protein with its gene located at chromosome 8q22, the abnormalities of which have been identified in several tumor types. MTDH is overexpressed in a number of malignancies, such as breast cancer, malignant glioma, and neuroblastoma, and its overexpression is associated with poor clinical outcome. MTDH plays an important role in the regulation of carcinogenesis and tumor progression. This antibody got two bands about 70 kDa and 80 kDa in western blotting, possibly due to posttranslational modification. This antibody is specific to AEG-1/MTDH.

Applications

Tested applications:	ELISA, WB, IHC, IF, IP
Cited applications:	IHC, WB
Species specificity:	Human, Mouse, Rat; other species not tested.
Cited species:	Human
Calculated AEG-1/MTDH-Specific MW:	582aa, 64 kDa
Observed AEG-1/MTDH-Specific MW:	65-70 kDa
Positive WB detected in	MCF7 cells, A375 cells, A549 cells, DU 145 cells, HeLa cells, HepG2 cells, PC-3 cells, RAW 264.7 cells
Positive IP detected in	MCF-7 cells
Positive IHC detected in	Human prostate cancer tissue, human breast cancer tissue, human liver cancer tissue, human stomach cancer tissue, mouse brain tissue
Positive IF detected in	MCF-7 cells
Recommended dilution:	WB: 1:500-1:5000 IP: 1:500-1:5000 IHC: 1:20-1:200 IF: 1:20-1:200

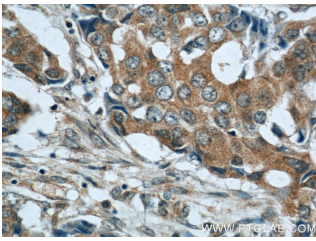
Application key: WB = Western blotting, IHC = Immunohistochemistry, IF = Immunofluorescence, IP = Immunoprecipitation

Immunogen information

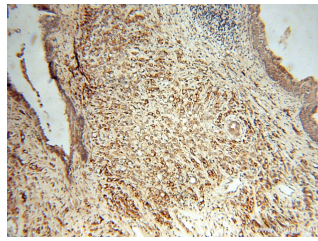
Immunogen:	Ag4840
GenBank accession number:	BC045642
Gene ID (NCBI):	92140
Full name:	Metadherin

Product information

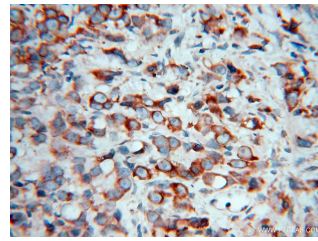
Purification method:	Antigen affinity purification
Storage:	PBS with 0.02% sodium azide and 50% glycerol pH 7.3. Store at -20°C.



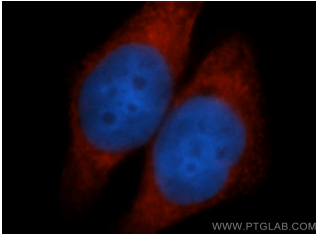
Immunohistochemical of paraffin-embedded human breast cancer using 13860-1-AP (AEG-1 antibody) at dilution of 1:50 (under 40x lens)



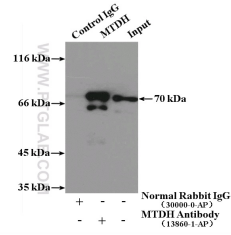
Immunohistochemical of paraffin-embedded human prostate cancer using 13860-1-AP (AEG-1 antibody) at dilution of 1:100 (under 10x lens)



Immunohistochemical of paraffin-embedded human prostate cancer using 13860-1-AP (AEG-1 antibody) at dilution of 1:100 (under 40x lens)



Immunofluorescent analysis of MCF-7 cells, using MTDH antibody 13860-1-AP at 1:50 dilution and Rhodamine-labeled goat anti-rabbit IgG (red). Blue pseudocolor = DAPI (fluorescent DNA dye).



IP Result of anti-AEG-1 (IP:13860-1-AP, 3ug; Detection:13860-1-AP 1:1000) with MCF-7 cells lysate 3250ug.